

ΠΣΑ Pi Sigma Alpha

The National Political Science Honor Society

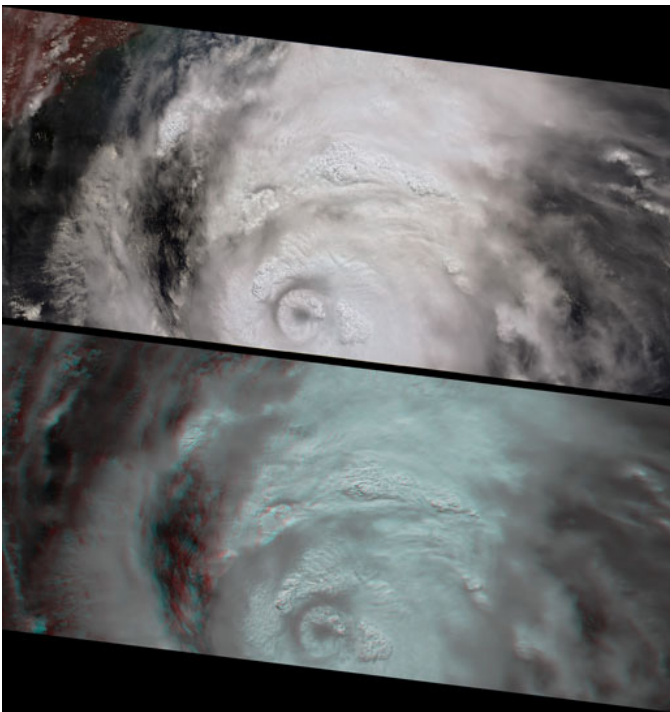
NEWSLETTER

Volume 14

Fall 2005

Number 1

THE AFTERMATH OF KATRINA: IN SUPPORT OF RELIEF AND STUDENT RELOCATION EFFORTS



Satellite image of Hurricane Katrina bearing down on the Gulf Coast, 8/27/05. Source: NASA

On the morning of August 29, 2005, Hurricane Katrina came smashing ashore with 145 mph-plus winds along the Louisiana and Mississippi Gulf Coast to deliver a sustained, devastating attack on the major population centers of New Orleans, Louisiana and Gulfport and Biloxi, Mississippi. Many smaller cities and towns in the region also suffered inhuman destruction, and some were *literally* completely destroyed. National Weather Service (NWS) bulletins in New Orleans, one of the top 50 Metropolitan Statistical Areas in the country, issued in the hours before landfall became increasingly desperate as the storm began to track westerly. The NWS bulletin issued at 10:11 a.m. on August 28, less than 24 hours before landfall, warned of coming disaster in a remarkably alarmed fashion for the normally cautious and staid tone to which news professionals had become accustomed. Katrina was predicted to rival “the intensity of Hurricane Camille in 1969.” Most of the area “will be uninhabitable for weeks,” “all gabled roofs will fail,” “the majority of industrial buildings will become non-functional,” people and animals outside “will face certain death if struck” by flying debris, and livestock left to face the winds “will be killed.” Most chillingly predictive was the sixth of the nine short, choppy

and usually boilerplate paragraphs warning of the coming disaster— but this was no boilerplate: “power outages will last for weeks, as most power poles will be down and transformers destroyed. *Water shortages will make human suffering incredible by modern standards.*”

Sadly and in retrospect, we are all aware of the frightening accuracy of this bulletin. We are also aware of the great losses suffered by the people of the region in terms of life, property and security. Pi Sigma Alpha urges all of its members and advisors to support ongoing Hurricane Katrina relief efforts, now and in the future, as much and as selflessly as they can. The list of institutions closed as a result of the storm that have Pi Sigma Alpha chapters include Tulane University, Dillard University, Loyola University of New Orleans and The University of New Orleans. Other “chapter schools” in the affected area that reopened after storm-related delays were Louisiana State University, The University of Southern Mississippi, Jackson State University and McNeese State University.

(AFTERMATH OF KATRINA continued on Page 5)



National Office

Pi Sigma Alpha
1527 New Hampshire Avenue NW
Washington, DC 20036

Phone: (202) 483-2512

Fax: (202) 483-2657

Email: office@pisigmaalpha.org

WWW Home Page: www.pisigmaalpha.org

Executive Committee

President: Christopher J. Bosso

Northeastern University

President-Elect: Jon R. Bond

Texas A&M University

Executive Director: James I. Lengle

Georgetown University

Administrator, National Office: Nancy McManus

Newsletter Editor: John C. Kuzenski

North Carolina State University

Executive Council

Paul Allen Beck, Ohio State University

James E. Campbell, University at Buffalo (SUNY)

David T. Canon, University of Wisconsin-Madison

Raymond V. Christensen, Brigham Young University

Rosalee Clawson, Purdue University

Barry D. Friedman, North Georgia College
and State University

John Green, University of Akron

Paul Herrnson, University of Maryland

Brian Janiske, Cal State San Bernardino

Ruth S. Jones, Arizona State University

Robin Kolodny, Temple University

Susan MacManus, University of South Florida

Paula D. McClain, Duke University

Shirley Anne Warshaw, Gettysburg College

PRESIDENT'S ADDRESS:

WHERE ARE WE GOING?

Welcome to the new school year. For some of you college life began in 2001, and your first semester radically affected by the horror of the attacks of September 11. For those of you in the class of 2006, in particular, the past four years have been as memorable and as pivotal as any time in the nation's history. Consider, for example:

- The military interventions in Afghanistan and Iraq, and the broader question of the U.S. role in the world. As Vietnam was the watershed conflict for a previous generation of students, I suspect that Iraq in particular has already influenced your own political views. Whatever your views about the U.S. commitment, there is no question that its steep fiscal cost alone—already over \$200 billion—will shape the overall agenda of American government throughout your adult lives. Can even the world's wealthiest and most powerful nation sustain its considerable presence abroad while also keeping its promises to its own citizens? What costs, whether in human or fiscal terms, are Americans willing to bear?
- The stunning devastation wrought by Hurricane Katrina. As *New York Times* columnist David Brooks wrote on September 1, disasters like Katrina “wash away the surface of society, the settled way things have been done. They expose the underlying power structures, the injustices, the patterns of corruption and the unacknowledged inequalities. When you look back over the meteorological turbulence in this nation's history, it's striking how often political turbulence followed.” Katrina, perhaps the greatest natural disaster in American history, will have profound economic, social, political, and environmental impacts for the nation as a whole for years to come.
- The potential judicial revolution as a result of the death of Chief Justice William Rehnquist and retirement of Justice Sandra Day O'Connor. With President Bush offered the almost unparalleled opportunity to appoint two new justices at one time, and the prospect of a Court shaped by a young Chief Justice John Roberts for years to come, the question is the degree to which the Court will extend the conservative judicial ethos in such areas as federalism, civil rights and liberties (including areas like abortion), and the fundamental role of government in our lives.

(PRESIDENT'S ADDRESS continued on page 3)

BROOKS DELIVERS THOUGHT-PROVOKING ADDRESS FOR PI SIGMA ALPHA LECTURE AT 2005 APSA MEETING



The 2005 American Political Science Association Annual Meeting took place in Washington, DC between September 1-4, 2005, engaging over 7,200 participants with this year's theme: "Mobilizing Democracy." The conference, which is regularly the largest annual gathering of political scientists in the world, featured 47 different thematic

divisions with 730 panel and roundtable presentations on this year's agenda. Pi Sigma Alpha was featured prominently throughout the meeting in the attendance of many of its faculty advisors and some student members. Additionally, the annual Pi Sigma Alpha lecture was yet again a rousing and thought-provoking success, this year bringing New York *Times* columnist David Brooks to the meeting.

Brooks, drawing from themes explored in books he has authored, discussed the growing resegregation of American society and its impacts on political discourse and deliberation. The line of segregation Brooks sees is not innately racial, but is drawn instead along the growing cultural gap separating liberal and conservative "meritocracies." By this term, Brooks means that educated liberals and conservatives increasingly reside in distinct political, cultural, religious and even physical spaces, each seeking to live with kindred spirits rather than mix with those with whom they share so little in terms of ideology and sociopolitical outlook. Along the way, Brooks notes, neither group is likely to have much routine interaction

with working class whites or minorities. The segregation of educated elites from the rest of society has major consequences for democracy.

Brooks also used the tragedy of Hurricane Katrina to argue that the great challenge facing conservatives was that of inequality in America. The emerging issue, Brooks said, is not the size of government, but its effectiveness in the face of the growing gap between the educated elite and everyone else.

In addition to Brooks' presentation of the Pi Sigma Alpha lecture, the 2005 APSA Annual Meeting featured a range of other interesting plenary speakers. Among these speakers were Andrew Natsios, Administrator of the USAID program, and Rashid Khalidi, Professor and Director of the Middle East Institute at Columbia University. This year's registered attendance of 7,200 participants is a new record for the meeting.



(PRESIDENT'S ADDRESS continued from page 2)

- The destruction of the space shuttle Columbia, which put an exclamation mark on the dangers inherent in space exploration and raises fundamental questions about the future of the space program. The shuttle program is about to end and, despite brave talk about going back to the moon or even Mars, many wonder whether the nation is committed to or can afford continued human exploration of space? The direction of the space program may pale by comparison to issues like Iraq and the impacts of Hurricane Katrina, but its symbolic value alone to a nation that embraces the "frontier" makes it worth discussion.

Great events generate great issues. Pi Sigma Alpha was founded "for the purpose of bringing together students and

faculty interested in the study of government and politics." I can think of no better purpose for Pi Sigma Alpha than to use your chapters as vehicles for campus-wide discourse on these and other critical issues. The national office of Pi Sigma Alpha stands ready to assist through its chapter activity grants program, and I urge you to apply for a grant, organize campus events, and start the conversation. Your campus, your fellow students, and your nation will be all the better for it. After all, it's your future you're talking about.

Have a great year. We look forward to hearing from you.

Christopher J. Bosso
President, Pi Sigma Alpha

2005 CHAPTER ACTIVITY GRANT COMPETITION

Chapters are invited to submit proposals for the 24th Annual Chapter Activity Grant Competition. Proposals should be mailed to the National Office no earlier than October 1, and no later than October 31, 2005. Proposals should be in one of four general categories:

Membership: activities which increase the membership in a chapter or its visibility on campus, such as conducting a career day for political science students, preparing orientation materials, etc.

Society Affairs: program activities, such as essay contests, newsletters, student debates, speakers, public service awards, political activism projects, candidate debates. **NOTE:** Pi Sigma Alpha cannot fund activities that benefit or promote any one political candidate or party over competing candidates or parties.

Service: Projects to benefit local schools or other community groups are always allowed. Proposals for activities directed towards relief for Hurricane Katrina victims, especially if undertaken in cooperation with other chapters and/or with other honor societies or student groups on campus, are especially welcome.

Ethics: Pi Sigma Alpha is participating in the Association of College Honor Societies (ACHS) three-year project on the issue of ethics in higher education and in society. Chapters are encouraged to design grant projects addressing the theme of ethics in any of its countless manifestations: academic integrity, college recruitment, ethical issues in politics, environmental protection vs. economic progress, etc. Projects might include essay contests, discussion forums, outside speakers, film screenings with discussions, etc.

Rules and Guidelines

Please read carefully. Proposals that do not follow these guidelines may be eliminated from consideration.

1. Each chapter may submit only one proposal on its own and the proposal must be for a single activity only, not multiple activities throughout the year. This does not preclude a chapter from participating in a cooperative regional project proposal with other chapters. Cooperative proposals are given most favorable consideration by the Awards Committee, especially those which include plans to bring together students from several chapters in a regional or statewide conference or forum.
2. **MAXIMUM ALLOWABLE AMOUNTS :**
Total proposal: \$2,000
 (most proposals are funded below this amount)
Honoraria - \$150 per speaker
Banquet meals - \$12.50 per person for dinner; \$7.50 per person for lunch

Student paper awards - \$100 first prize; \$75 second prize; \$50 third prize

3. **ITEMS WHICH WILL NOT BE FUNDED:** Rental of campus meeting rooms, campus publicity, honoraria or any other payments to your own faculty, excessive travel costs for outside speakers, excessive decorations such as flowers, purchase of Pi Sigma Alpha merchandise. Students should seek university support for their projects in the form of meeting space, expect local faculty to participate without payment, and make use of campus publications to advertise their projects. The selection committee will give favorable consideration to proposals which show plans to seek additional or matching funding from other sources.
4. Continuing projects, such as student journals, will normally not be supported for more than two years running.
5. The proposal must be submitted on the Chapter Advisor's official school letterhead, and must be approved with the Chapter Advisor's signature. The proposal may be mailed or faxed to the National Office and must be postmarked no earlier than October 1 and no later than October 31, 2005. E-mailed proposals will not be accepted. The proposal must include a detailed description of the proposed project and a budget. The Committee will consider the quality of the proposal itself in addition to the merit of the proposed activity.
6. Chapters that have initiated no new members during the past academic year are not eligible to receive grants. Chapters which have not submitted a detailed report on the expenditure of an earlier grant are not eligible.
7. **IMPORTANT:** Pi Sigma Alpha auditors require that a written report on the project, including an accounting of expenditures, be submitted to the National Office, on official school letterhead, no later than June 15, 2006. Failure to submit the grant report will jeopardize a chapter's chances of winning future grants. A checklist and format for this report will be provided with each grant.
8. The Committee on Chapter Activity Grants will meet in early November and will select proposals based on intrinsic merit, the likely benefit to chapters or to society of the proposed projects, and clarity of the proposal itself. Announcement of the awards will be made by December 1, 2005.

Any questions? Contact the national office:

PI SIGMA ALPHA CHAPTER ACTIVITY GRANTS
 COMMITTEE
 1527 New Hampshire Avenue, NW
 Washington, DC 20036
 Phone (202) 483-2512 Fax (202) 483-2657
office@pisigmaalpha.org

(AFTERMATH OF KATRINA continued from Page 1)

Large numbers of college students at these and some other schools were displaced by the storm, and those whose personal situations allowed them to continue their degree program in Fall 2005 found themselves in need of a new school—temporarily, at least— at which they could do so. Many colleges and universities across the United States are now offering admission, housing and relocation aid and/or other benefits to college students whose course of study was interrupted by Hurricane Katrina. Shortly after the scope of the devastation along the Gulf Coast was assessed, the Pi Sigma Alpha National Office sent a request for information to advisors nationwide asking them to report on their institution's plans to provide assistance. The response, in a word, was overwhelming— and it is assuredly only a partial list of academic institutions offering help. In no particular order, the *Newsletter* would like to identify the schools from which chapter advisors responded to our call for information. For students from southern Louisiana, Mississippi and Alabama who have not yet found help re-establishing their program of study, we hope this list gives you an idea of where to turn. A number of these schools report that they have already accepted students from some of the colleges and universities that were in Katrina's path.

University of Arkansas- Little Rock
 North Carolina State University
 Oregon State University
 University of St. Thomas (Houston)
 College of Staten Island
 Centre College
 Lincoln University
 University of North Dakota
 St. Francis College (NY)
 Oklahoma City University
 Rollins College
 St. Mary's College
 George Mason University
 Santa Clara (CA) University
 Ramapo College
 Texas A&M- Kingsville
 Whittier College
 California State University- Santa Barbara
 University of Illinois at Urbana-Champaign
 Rowan University
 University of California at Berkeley
 Howard University
 Wichita State University
 Indiana U.-Purdue U. (Indianapolis)
 University of Alabama
 Duke University
 Wilkes University
 University of Pennsylvania
 Mills College
 Ohio Northern University
 City University of New York
 Temple University
 American University
 Austin Peay State University
 California University of Pennsylvania
 Loyola Marymount College
 Wittenberg University

Salve Regina University
 University of Maryland
 Florida International University
 College of William and Mary
 New York University
 University of Alabama at Birmingham
 High Point University (NC)
 Greensboro College
 University of Alaska
 Cornell University
 Monmouth University
 University of Toledo
 College of Charleston (SC)
 McNeese State University (LA)
 University of Central Oklahoma
 San Jose State University
 Adelphi University
 Chicago State University
 St. Lawrence University
 Creighton University
 Moravian College
 Bloomsburg University
 University of Southern Indiana
 St. Joseph's University
 Wheaton College
 Belmont University
 Texas A&M- Commerce
 Marist College
 Rutgers University
 University of South Alabama
 University of Utah
 University of Texas at Arlington
 Ohio University
 Brown University
 Kenyon College
 Iona College
 University of North Carolina-Chapel Hill

The type of assistance— free or reduced tuition, housing, available to all or only students from the state, etc.— differs from school to school, so students who are still seeking arrangements for Spring 2006 are advised to contact the institutions which interest them directly to get more information. The Southern Association of Colleges and Schools, an accrediting body for institutions of higher education in the region affected by Hurricane Katrina, has updates and complete lists of participating institutions (some with special internet information links) at its website, www.sacscoc.org. The American Political Science Association has Katrina-related student relocation information available at www.apsanet.org/content_19211.cfm, and the group Campus Contact has a listing of relief activities and assistance at www.compact.org/resource/hurricane.html.

This year, Pi Sigma Alpha chapters are reminded that the National Office highly encourages Chapter Activity Grant proposals that are focused on providing material help in the hurricane relief efforts going on in and around New Orleans, Biloxi/Gulfport and other affected areas. Proposals that are submitted by two or more chapters as joint applicants are also welcome.

Pi Sigma Alpha, the National Political Science Honor Society, proudly announces the winners of its awards for members and chapters for 2005.

Washington Intern Scholarships

Ashley Pichon, Hofstra University
 Adam Reiser, University of Utah
 Devin Rhinerson, Emory University
 Meggin Rutherford, Austin College
 Luke Wake, Elon University (*TWC internship*)

PSA/Howard Penniman Scholarships for Graduate Study

Stephanie Burchard, University of New Orleans
 Kristen Hudak, Mercyhurst College
 Michael Woodruff, Emory University

Best Chapter Advisors

Michelle Brophy-Baermann, University of Wisconsin-Stevens Point
 Jan Hardt, University of Central Oklahoma
 Scott Huffmon, Winthrop University

Best Chapters, Schools with over 15,000 Enrollment:

Nu Chapter, University of Washington. Prof. Rachel Cichowski, Advisor
Alpha Zeta Chapter, University of Maryland. Prof. Margaret Pearson & Ms. Jennifer Coarts, Advisors
Alpha Iota Chapter, Utah State University. Profs. Shannon Peterson & Wm. Furlong, Advisors
Beta Mu Chapter, Brigham Young University. Prof. Kendall Stiles, Advisor
Sigma Mu Chapter, University of Central Oklahoma. Profs. Jan Hardt & Brett Sharp, Advisors

Best Chapters, Schools with 6,000 - 15,000 Enrollment:

Beta Tau Chapter, University of Pennsylvania. Prof. Rudra Sil, Advisor
Epsilon Mu Chapter, University of Montana. Prof. Ramona Grey, Advisor
Kappa Eta Chapter, Austin Peay State University. Prof. David Kanervo, Advisor
Mu Pi Chapter, Winthrop University. Prof. Scott Huffmon, Advisor

Best Chapters, Schools with under 6,000 Enrollment:

Gamma Sigma Chapter, Sewanee: University of the South. Prof. Paige Schneider, Advisor
Omicron Lambda Chapter, Illinois Wesleyan University. Prof. James Simeone, Advisor
Pi Iota Chapter, Ohio Northern University. Prof. Robert Alexander, Advisor
Pi Nu Chapter, Benedictine University. Prof. Roger Rose, Advisor

Best Undergraduate Class Papers

FIRST PLACE: "Candidates' Use of the Media in the Most Recent Elections in Canada, Great Britain and the United States," by Kate Metcalf, University of Richmond.
 RUNNER-UP: "The Publication of Polls and Voter Selection," by Caitlin Dwyer, Hartwick College.
 RUNNER-UP: "In the Coverage of the *Rolling Stone*: The Significance of Politics in a Medium of Popular Culture," by Andrew Bloeser, The University of Wisconsin-Stevens Point

Best Undergraduate Honors Theses

FIRST PLACE: "Understanding Civil Liberties Judgments after September 11: An Experimental Study," by Chase Samples, Furman University
 RUNNER-UP: "Affecting Citizen Satisfaction: Transitions to Mixed-Member Electoral Systems in Latin America and the Effects on Citizen Satisfaction," by Jason Eichorst, Texas A&M University
 RUNNER-UP: "Amoral Liberals, Liberal Democrats, and Moral Republicans: Some Explanations for the Democratic Party's Apparent Debility," by Jacqueline Chattopadhyay, University of California-Irvine

EDITOR'S NOTES

John C. Kuzenski

Welcome to another academic year, and to another Fall issue of the *Newsletter*. Having grown up in a university setting with parents who both worked at Louisiana State University, and then having gone through a range of degree programs at major state universities through completion of the Ph.D., I am decidedly a creature of the college/university life cycle. Despite what the calendar may say to the contrary, the actual start of the year in my world is late August and early September. It ends in May and early June, and then there's an annual "limbo" period for two and a half months where the nation's expansive, well-maintained, multi-building-ed mini-city-states in their full glory, which most people simply call "college campuses," begin to wind slowly down from another year of their populated, vibrant, important activity into a gentle summer slumber. They desire a brief hibernation, to rest and recuperate from the effort of sending another graduating class off to fulfilling lives and careers. While their students look forward to an extended vacation, so do the campuses with their precipitous decline in population—as they rest gently in anticipation of their returning friends, back for another year of friendship, fun, scholarship and personal growth when the weather cools.

And for the somewhat questionable attempt at poetic license in the above paragraph, this is exactly why the City of Raleigh suddenly, in August, became a source of great joy to me again as its inner sanctum of North Carolina State University sprang back to life and welcomed its returning charges. I have, of course, experienced this hustle-and-bustle reawakening many times before, in Baton Rouge—in Starkville, Mississippi—in Athens, Georgia and Chapel Hill, North Carolina. But it never ceases to amaze and entertain me; regardless of where it happens, the rising from dormancy of the "gentle giant" is always a miraculous thing in my eyes. Students return from life-changing travels or jobs; professors begin their Fall course preps; bookstores return to regular hours fully stocked; everything gets louder, busier and more exciting, signaling the completion of resuscitation into another annual cycle of mission. It beats seeing the turning of the leaves in the mountains, and even gently edges out "return of NCAA football to a lesser-sports-weary world," in my book.

And in turn, this is why the start of the 2005-06 Academic Year begins on a bittersweet note. This year's spectacle has been shaken to the core by a greater one of natural disaster—Hurricane Katrina in late August, and again by Hurricane Rita to her immediate west less than one month later. There is, of course, much more to lament about these storms than the great damage inflicted upon sister institutions of higher education along the Gulf Coast; many lives were lost (clearly, some pathetically needlessly), many survivor and/or evacuee lives were permanently altered in the space of mere hours, and the effects of those storms will continue to pose great hardship for months—and likely *years*—to come. Katrina and Rita challenge everyone to work harder, better and in a more committed manner to make their contributions to the rebuilding of the

region, indeed to the United States itself. First responders, military units, emergency planners and resource providers in the affected areas are the ones getting the most visible press, and that's more than fair because they're the ones who responded "firstest with the mostest," putting their lives on hold and on the line to help their fellow human beings. There truly is no more selfless or noble calling than this kind of devotion to duty. But now, in the storms' aftermath, we are increasingly realizing that these natural tragedies will challenge us *all* to play new or altered roles in bringing the country back together.

Political scientists and political science students must play their part. Most of us will not wind up giving interviews on CNN, get our names in the paper or have grand statuary built in our honor for our contributions, but that is in the nature of things. We nevertheless have to draw on our professionalism and our pooled intellectual skills to inquire into the political ramifications of such wide-scale disasters, or work with demographers in figuring out how the sudden population displacements that have occurred may change the balance of state, regional and national power. We must work with lawyers to come up with sufficient ways of resolving disputes and protecting rights, as evacuees cling to the new communities they were forced to adopt for continued assistance. Perhaps some of those communities—their local resources already stretched paper-thin—will experience a "newcomer backlash," the likes of which our country saw against Midwesterners escaping the dustbowl into California in the 1930s. Political scientists working in health, environmental and/or urban policy will be challenged to develop new paradigms that account for a host of new issues that were very much dormant and ignored in the pre-Katrina-urban-disaster world of August, 2005. Political science students, hopefully, will develop a new appreciation for their studies and the great potential of the discipline to leave a lasting impact upon its world. Political science is substantially quieter, more subtle and decidedly more long-range-oriented than firefighting, helicopter rescuing or ER-doctoring. That is its design. But it is now challenged to do its part in the struggle, and to do it better than perhaps it has ever done in numerous generations. Never in contemporary times has there been a more urgent call for renewed vigor, discipline and dedication to high-quality applied research. Today's best political science students must become the best political science practitioners and professors of tomorrow to maintain the efficacy of the healing over coming decades.

The Fall issue of the *Newsletter*, astute and regular readers will know, has typically featured the annual American Political Science Association meeting and Pi Sigma Alpha's activities therein as its cover story. That is not the case with this issue, and that is also not to suggest that the activities, the speakers or the presented scholarship were any less compelling than they normally are at such an auspicious conference. Given the perceived need to ensure that our members' academic careers can continue in as

2005 APSA TEACHING AWARDS RECIPIENTS ANNOUNCED AT ANNUAL MEETING

Pi Sigma Alpha again co-sponsored, with Rowman and Littlefield Publishers, the Teaching Awards Reception at the Annual Meeting of the American Political Science Association in Washington.

This event honors political science faculty who have received campus-wide teaching awards at their home institutions and, not surprisingly, quite a few current and former Pi Sigma Alpha Chapter Advisors were among those honored in 2005. We offer our most sincere congratulations to these faculty members, who have shown their dedication to undergraduate teaching in so many ways. If the following list is incomplete we apologize and hope you will let us know whom we have missed. We will be sure to print any additional names in a later issue.

PI SIGMA ALPHA ADVISORS RECEIVING APSA TEACHING AWARDS IN 2005

JOHN BUBLIC, *BARTON COLLEGE*
 CHARLES BULLOCK III, *UNIVERSITY OF GEORGIA*
 GREGORY BUTLER, *NEW MEXICO STATE UNIVERSITY*
 LAUREL ELDER, *HARTWICK COLLEGE*
 ANGELA HIGH-PIPPERT, *UNIVERSITY OF ST. THOMAS*
 SAMUEL HOFF, *DELAWARE STATE UNIVERSITY*
 ALICE JACKSON, *MORGAN STATE UNIVERSITY*
 MARY KAZMIERCZAK, *CARROLL COLLEGE*
 JOHN MALTESE, *UNIVERSITY OF GEORGIA*
 JOHN RAUSCH, JR., *WEST TEXAS A&M UNIVERSITY*
 RAPHAEL SONENSHEIN, *CAL STATE UNIVERSITY - FULLERTON*
 BERNARD TAMAS, *ILLINOIS STATE UNIVERSITY*
 FREDERIC TORIMIRO, *FERRUM COLLEGE*
 JUDITH YOUNGMAN, *U.S. COAST GUARD ACADEMY*

(EDITOR'S NOTES continued from page 7)

normal a manner as possible, however, and as an important display of solidarity and a call to action to continue making noteworthy relief efforts, I trust that particular editorial decision needs no further explanation.

Please remember to continue being as generous as you can to major relief funds, such as the American Red Cross (www.redcross.org) and, because I am the very definition of "nutty cat person," the Humane Society of the United States (www.hsus.org). And then, I hope you will rededicate yourself to the very important notion that your position as a political science scholar or student is not insignificant in helping further relief efforts. You have an important role in future acts of the drama, and it is substantially less important that you play a headline part *adequately* than that you play a smaller part in a larger ensemble with *stunning excellence* of knowledge and craft.

To my fellow native South Louisianians and friends and colleagues in southern Mississippi and Texas, on a final and personal note, you are aware of the remarkable Acadian ability to face great adversity with faith in the indestructibility of their culture, communities and the small mercies of the future. Their faiths—and yours—are the region's greatest natural resources. Not even nature's fury can rob you of it. *Nous sommes avec vous.*

SPSA CHANGES CONFERENCE VENUE IN THE WAKE OF HURRICANE KATRINA

The Southern Political Science Association has announced that the 2006 SPSA Conference, originally scheduled for January 4-7 in New Orleans, Louisiana, will not be held in that city due to extensive damage to the conference hotel. Working with Intercontinental Hotels Corporation, however, the Association has made arrangements to relocate the meeting to the new Intercontinental Buckhead Hotel in metropolitan Atlanta, Georgia. The inclusive dates of the meeting have not changed, however; it will still take place January 4-7, 2006. For more information, see the SPSA's conference information web page, www.spsa.net/conference06.htm.

PI SIGMA ALPHA STUDENTS RECEIVE SCHOLARSHIPS TO INTERN IN WASHINGTON, DC

Seven outstanding Pi Sigma Alpha students have received scholarships to the Washington Internship Institute (WII), the premier internship program in Washington, DC. WII rewards academic excellence by offering all inducted members of Pi Sigma Alpha, and all the other member societies of the Association of College Honor Societies (ACHS), a \$500 scholarship towards participation in WII's program.

The scholarship recipients have gained first-hand experience in government, international relations, environmental legislation, human rights, and diplomacy by interning at high-profile organizations in Washington, DC. In addition, they have participated in site visits to agencies such as the Department of State and Congress.

Richard Brennen, a member of Pi Sigma Alpha and a senior at Fairfield University in Connecticut, interned with the Partnership for Public Service this summer. "WII made me feel comfortable about getting an internship in Washington, and I am glad I came to Washington," he said. During an event hosted by his internship site, Richard had an opportunity to meet White House Chief of Staff Andrew Card. He was also delighted to meet Senators Dick Durbin and Barack Obama from his home state of Illinois following a tour of the Capitol.

The WII program gives students the unique opportunity to use the city of Washington, DC as a classroom. One of the Pi Sigma Alpha students reported, "We held class in a State Department conference room, which was awe-inspiring. Our guest speaker was the Deputy Secretary for the African Affairs Bureau. As we walked out of the conference room, somewhat sullen after discussing current issues in Africa, we passed by a glassed-in reception room and saw Condoleezza Rice! The whole class stopped dead in our tracks, and the gracious State Department employees urged us into the room for a better view, moving so I could take a picture of this phenomenal woman! WII opened the door for these experiences and more, and for that, I am so grateful."

The other Pi Sigma Alpha scholars have pursued rewarding experiences at a variety of internship sites.

Amy Quinn is currently enrolled in WII for the fall 2005 semester. Amy is a recent graduate of California State

Polytechnic University, Pomona. She is interning at the Protection Project.

Terri Waywell, a student at the University of Oklahoma, interned at Amnesty International over the summer. Recently Terri passed the State Department's Foreign Service examination.

Nadezhda Malinova is a junior at Henderson State University in Arkansas. She interned at Clean Water Action during the summer term of 2005.

Sarah Galey, a junior at Gettysburg College, participated in our program during the summer term of 2005. She interned at the Italian Cultural Institute in Washington, DC.

Ethan Maron interned at the Coalition for American Leadership Abroad during the spring semester of 2005. He is a senior at Roger Williams University in Rhode Island.

Natalia Kostus is a recent graduate of the University of Indianapolis. She interned at Bannerman and Associates during the spring semester of 2005.

About WII

The Washington Internship Institute (WII) is a recognized leader in the field of experiential education, creating Washington, DC-based learning opportunities for students. Its highly successful academic programs include the "Embassy and Diplomatic Scholars" program, which arranges internships in embassies and international organizations, and the "Capital Experience," which places interns at such sites as the Smithsonian Institution, Capitol Hill, Department of Justice, and numerous advocacy organizations.

WII offers a full package for students: placement, classes, housing, site visits, briefings, supervision, evaluation, student activities and more!

For more information visit www.wiic.org or call us toll-free at 800-435-0770.

NOTE: The Washington Center for Internships and Academic Seminars (www.twc.edu) and The Fund for American Studies (www.fas.org) partners with the ACHS to offer benefits to members of a number of student honor societies. The Washington Internship Institute program is separate from Pi Sigma Alpha's own Washington Internship Program, available only to Pi Sigma Alpha members.

PSAPROFILES: MARIE A. EISENSTEIN



Marie A. Eisenstein (formerly Witting) is one of the inaugural recipients of the Pi Sigma Alpha/Howard Penniman Graduate Scholarships, started in 1996, which she received as a first year graduate student in the

Fall semester of that year. She started graduate school immediately after finishing her B.A. in political science at Purdue University Calumet (Hammond, IN), where she graduated *magna cum laude*. Eisenstein then went to the main campus of Purdue University, from which she received both the Master of Arts and Doctor of Philosophy degrees in Political Science. She began a tenure-track position at Indiana University Northwest (IUN) in August, 2004 as an Assistant Professor of Political Science. The primary focus of Eisenstein's research is the intersection of religion, democracy, and political tolerance in the 21st Century.

The Pi Sigma Alpha *Newsletter* is pleased to have had the opportunity to interview Professor Eisenstein about her development and experiences as a Pi Sigma Alpha member, graduate student and now member of the professoriate.

Newsletter: How long have you been a member of Pi Sigma Alpha, and where did you join? What got you interested in Pi Sigma Alpha?

Eisenstein: I have been a member of Pi Sigma Alpha since 1993 or 1994; I am unsure of the exact date that I became a member. I joined Pi Sigma Alpha as one of the first — if not founding — members of the Tau Psi chapter at Purdue

University Calumet. I became interested in Pi Sigma Alpha because I wanted to be a member of a school organization where I felt I would have a chance for leadership and where I could learn something in an area that interested me (politics and government). By joining the Tau Psi chapter at Purdue University Calumet and serving for two years as chapter president, I was able to accomplish these goals.

Newsletter: What is your most memorable experience as an undergraduate member of Pi Sigma Alpha?

Eisenstein: While it is difficult to choose just one memorable experience, I would have to say that one of the experiences of which I am most proud is the year that the Tau Psi chapter hosted the first ever Hammond, Indiana mayoral debate. Hammond is a city of approximately 80,000 people, so this was a big event for undergraduates to “pull off.” However, we hosted and moderated this debate very successfully having it covered by local print media as well as by our local television station— and it was even broadcast live over the local radio. The debate had an attendance of approximately 300.

I (remember) the time we decided to hold a recycling drive as a fundraiser. We did this in the month of November. Unfortunately, the Saturday we held the drive was just about the coldest day in November in Northwest Indiana history. Consequently, turnout was low. But I remember sitting in a van most of the day with other Pi Sigma Alpha members and while we did not do as well as expected with our fundraiser, we had a great time.

Another memorable moment just came to me. I am reminded of it every time I enter my office at IUN where I have a picture of myself delivering the commencement address at my 1996 graduation from Purdue Univ. Calumet (I gave the student “response” that year). When I received my B.A. in 1996 and gave my speech, I was proudly wearing my Pi Sigma Alpha medallion. It hangs in my office now.

Newsletter: In 1996, Pi Sigma Alpha announced what has now become a staple of the programs and services the National Office provides to its members—the Howard Penniman Memorial Scholarship. You were one of the first recipients of that award! How did it feel when you got the news, and how did you learn about the award?

Eisenstein: When I got the news, I was elated for so many different reasons. I felt as if receiving the award was a recognition of everything I had accomplished as a chapter president of Pi Sigma Alpha - Tau Psi as well as a recognition of everything I had achieved academically as an undergraduate. It was a validating experience. I was also very excited because as a first generation college student, I was very apprehensive about the additional time and expense of graduate school. The monetary award very much provided a financial “cushion” with which to begin graduate school. I heard about the award because, if memory serves me correctly, it was advertised in an issue of the Pi Sigma Alpha *Newsletter* sent out by the national organization.

Newsletter: What’s the biggest difference, in your opinion, between an undergraduate program in political science and graduate school, for those readers who are contemplating the latter?

Eisenstein: The work load! Seriously, the amount

of work you do as a graduate student, particularly in the first one to two years, is more intense than any amount of work encountered as an undergraduate. The biggest difference between undergraduate and graduate work, looking back at it, is that as a graduate student you are asked to begin to assess why things occur and to develop theoretical explanations not expected of you as an undergraduate. In short, you are forced to move beyond description and simple analysis into generating theories and explanations of your own.

Newsletter: Now, at IUN, you’re working on forming a Pi Sigma Alpha chapter and serving as its inaugural advisor. What are the biggest challenges involved in that project, and how has support been for it from both the National Office and your department?

Eisenstein: The biggest challenge is attracting student interest. Because we are a small department at IUN, this means attracting interest from not just political science majors but also those who minor in political science. As I am at the beginning of the process of forming a new chapter, I have not had much experience with the National Office. But I anticipate that it will be very supportive, which is consistent with my experience with that office while an undergraduate chapter president. In terms of institutional support, my department has been very supportive and encouraged me to form a chapter at my campus.

Newsletter: On a final note, please complete this sentence: “If it weren’t for (blank), I’d probably go crazy.” Multiple answers are acceptable!

Eisenstein: Thanksgiving Break, Winter Break and Summer Break! Seriously, I cannot imagine a career with two weeks’ vacation. Work hard. Play hard (or at least sleep a lot when you have the chance).

UNDERGRADUATE JOURNAL NEWS

Purdue University's Delta Omega chapter of Pi Sigma Alpha is delighted to announce that it is now accepting submissions for *The Pi Sigma Alpha Undergraduate Journal of Politics*. The *Journal* provides an opportunity for outstanding undergraduate students to publish their research in a competitive national journal. We hope you will encourage your students to submit their research to the journal.

Our chapter has published *The American Undergraduate Journal of Politics and Government* since the spring of 2001, and it has become a premier outlet for undergraduate scholarship in political science. Starting with the Fall 2004 edition, the title of the *Journal* changed to *The Pi Sigma Alpha Undergraduate Journal of Politics*, and we are being sponsored by Pi Sigma Alpha, The National Political Science Honor Society.

The *Journal* is a student-run enterprise with an editor, deputy editor, and editorial board who are undergraduate Pi Sigma Alpha members from Purdue University. We also have an advisory board consisting of Purdue faculty and members of the Pi Sigma Alpha Executive Council.

The *Journal* welcomes submissions from undergraduates of any class or major; submissions from Pi Sigma Alpha members are especially encouraged. Our goal is to publish manuscripts of the highest quality in all areas of Political Science. In general, papers selected for publication have been well-written with a well-developed thesis, compelling

argument and original analysis. We typically publish papers of approximately 15-35 pages in length that have been written for an upper level course or an individual research project.

Manuscripts should include a short abstract (roughly 150 words), and citations and references should follow the *APSA Style Manual for Political Science*. Please make sure that all citations and references are complete and in the APSA style. Submissions must be in the form of a Microsoft Word document and should be e-mailed to journal@polsci.purdue.edu. Please include name, university, and contact details (mailing address, e-mail address, and phone number). Students may be asked to revise their manuscript before it is accepted for publication.

We greatly appreciate your efforts to encourage student submissions to *The Pi Sigma Alpha Undergraduate Journal of Politics*. If you have any questions please do not hesitate to e-mail us. Thank you for your time, and we hope to hear from your students soon.

Sincerely,

Clifford C. Pederson, Editor-in-Chief
 Rosalee A. Clawson, Faculty Advisor, Delta Omega
The PSA Undergraduate Journal of Politics
 Purdue University
journal@polsci.purdue.edu
clawson@polsci.purdue.edu

KEEPING YOUR CHAPTER ACTIVE

This information has been excerpted from the online resource "Keeping Your Chapter Active," under the Chapters tab at the Pi Sigma Alpha website—www.pisigmaalpha.org. For help thinking about how to reinvigorate your school's less active chapter, or to keep your active chapter on the proverbial ball, visit the site or call the National Office!

To keep its "active" status in the national organization a chapter must do only two things:

- initiate members at least once in each academic year, provided there are eligible students, and
- submit an annual report to the National Office.

Although the more dynamic a chapter is the more benefit students derive from membership in it, no chapter should

ever be allowed to lapse into oblivion because it cannot sustain as much activity as some other chapters. Students should at least be given the opportunity for academic recognition provided by membership in Pi Sigma Alpha even if their connection with the society never goes beyond the initiation ceremony.

Chapters sometimes go through cycles, with years of vigor followed by a temporary slump. This may be the result of a chapter advisor's sabbatical, a campus move in which the PSA records are temporarily misplaced, a missed communication between outgoing and incoming chapter officers as to what needs to be done, or some other disturbance in the rhythm and continuity of the chapter's usual activities. Students and chapter advisors need not be discouraged if this seems to have happened on their campus, but should keep the flame burning at whatever level they can — at least by initiating a new group of members — and take steps to reactivate their chapter. If a set of bylaws, a bank account, and a file of chapter records are in place their job will be easier, and a call to the National Office will bring them up to date on recent mailings and other useful administrative information.