

# Snapshot: Three Years of Political Science Doctoral Student Placement

Source: APSA Graduate Placement Survey, 2009-10, 2010-11, 2011-12

## AMERICAN POLITICAL SCIENCE ASSOCIATION

**Summary:** The total number, demographic composition, and placement of political science doctoral students on the job market have varied from 2009-10 to 2011-12. As Table 1 illustrates, there have been recent declines in the proportion of women, African-Americans and Latino/as on the job market,<sup>1</sup> yet increases in the proportion of Asian-American/Pacific-Islander and International job candidates.

We see consistency across these years in the proportion of job candidates studying American Politics, but a decline in Comparative Politics candidates and an increase in International Politics candidates (Table 1). Also, there has been a remarkable increase in the proportion of candidates on the market as ABDs, without their PhD in hand.

From 2009-10 to 2011-12, about 60% political science doctoral students were placed in academic faculty positions, on either the tenure or non-tenure track (Figure 1). Across the same time, the data indicate a decline in the proportion of post doc placements and an increase in the proportion of candidates not placed.

A more detailed examination of job placement for political science doctoral students is available to APSA members and member departments. See [A Longitudinal View of Political Science Doctoral Student Placement, 2009-2012](#) (updated June 2013) For a report on job advertisements, see [A Longitudinal Look at Political Science Job Postings in APSA e-Jobs](#) (updated June 2013).

**About the Data:** The data presented here are from the 2009-10, 2010-11 and 2011-12 APSA Graduate Placement Surveys. Directors of Graduate Studies provide individual level information about doctoral students in their programs if they (1) competed seriously for academic or non-academic jobs during the academic year, whether or not they were placed; (2) sought their first placement in the academic year, in either academic or nonacademic positions; and/or, (3) were repeat players on the market because they had *not* placed in previous years. In 2009-10, 69 doctoral programs reported 501 students; in 2010-2011, 76 programs reported 600 students; and 2011-2012, 41 programs reported 327 students. These data are weighted by departmental faculty size, yielding the totals reported in Table 1. With the 2010-11 survey, we changed the measurement for race and ethnicity to distinguish between International (non US citizens) and US citizens of different ethnicity and race. We recoded the 2009-10 data to reflect this change for the purposes of comparison.

**Citation:** American Political Science Association. 2013. "Snapshot: Three Years of Political Science Doctoral Student Placement." [http://www.apsanet.org/content\\_7623.cfm](http://www.apsanet.org/content_7623.cfm).

---

<sup>1</sup> We are concerned about these changes from 2010-11 to 2011-12, and will know more with time about whether they indicate a trend in the job market.

## Snapshot: Three Years of Political Science Doctoral Student Placement

Source: APSA Graduate Placement Survey, 2009-10, 2010-11, 2011-12

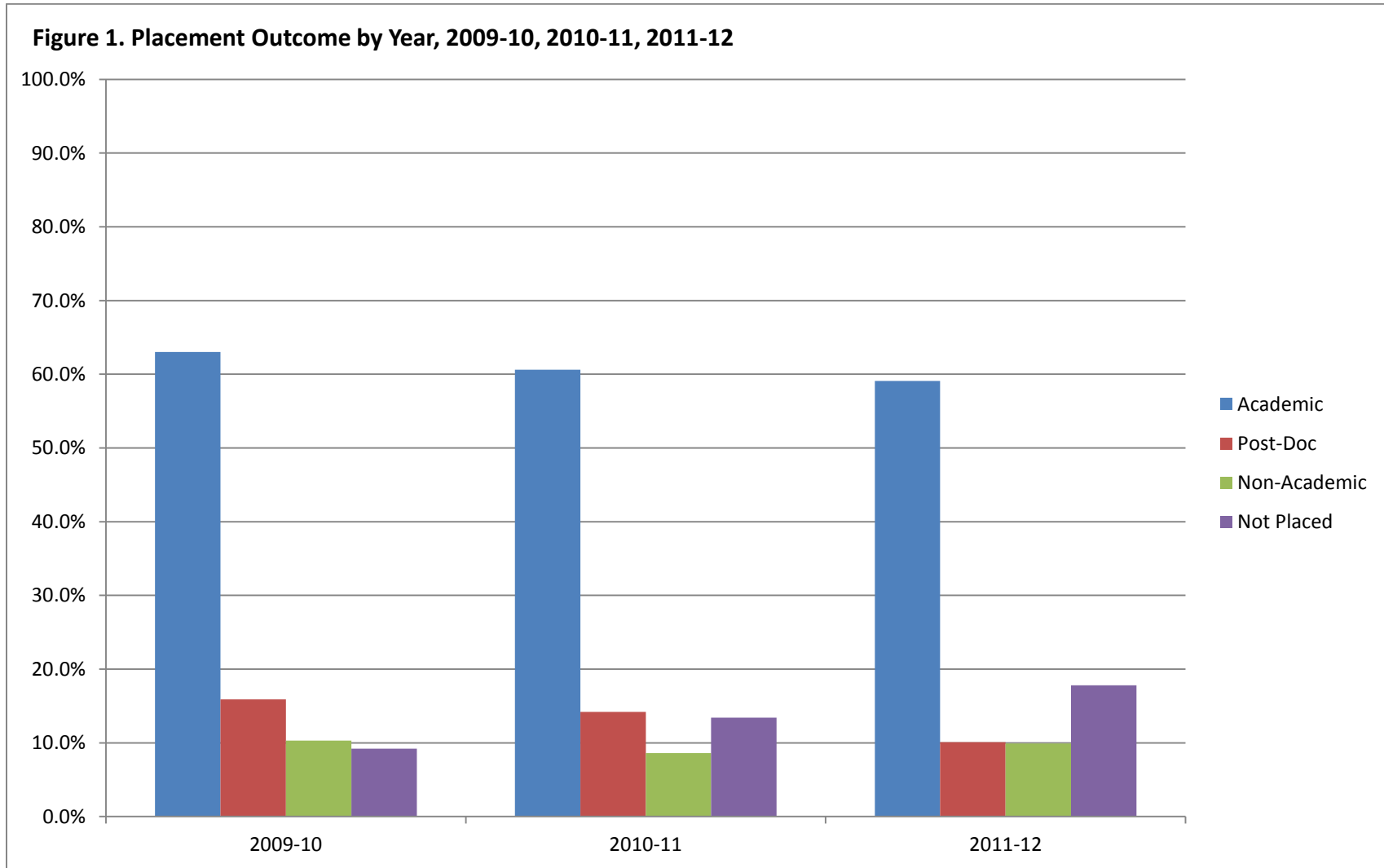
**Table 1: Characteristics of Job Market Candidates, 2009-10, 2010-11, 2011-12**

YEAR	2009-10 (n = 944)*		2010-11 (n = 1025)		2011-12 (n = 1023)	
	n	%	n	%	n	%
<b>CHARACTERISTIC</b>						
<b>Gender</b>						
Female	374	39.6	441	43.4	388	37.9
Male	570	60.4	580	56.6	636	62.1
Not Reported	--	--	5	0.5	--	--
<b>Race/Ethnicity</b>						
African American	30	3.2	38	3.7	23	2.2
Am. Indian/AK Native	--	--	1	0.1	--	--
Asian/Pacific Islander	27	2.8	23	2.1	39	3.8
Caucasian	538	57.0	568	55.4	581	56.8
Latino/a	26	2.8	24	2.3	11	1.1
International	279	29.6	310	30.2	358	35.0
Two or More Races	--	--	2	0.2	7	0.7
Other	3	0.3	--	--	--	--
Not Reported	41	4.3	59	5.7	5	0.4
<b>Major Field</b>						
American Politics	178	18.8	214	20.9	210	20.5
Comparative Politics	290	30.7	341	33.3	276	26.9
International Politics	219	23.2	225	21.9	281	27.5
Methods	16	1.7	4	0.4	9	0.9
Political Philosophy	141	15.0	113	11.0	130	12.7
Public Administration	18	1.9	26	2.5	46	4.5
Public Law	7	0.7	27	2.6	24	2.3
Public Policy	30	3.1	30	2.9	19	1.8
Other	24	2.5	30	2.9	22	2.1
Not Reported	24	2.5	34	3.3	2	0.8
<b>Degree Earned</b>						
ABD	89	9.4	267	26.0	319	31.2
Ph.D.	855	90.6	730	71.2	690	67.4
Not Reported	--	--	28	2.8	12	1.4
<b>Repeat Candidate</b>						
No	606	64.1	744	72.6	669	65.3
Yes	270	28.6	225	22.0	237	23.2
Not Reported	68	7.2	56	5.4	93	9.1

\* Weighted n, by faculty size.

## Snapshot: Three Years of Political Science Doctoral Student Placement

Source: APSA Graduate Placement Survey, 2009-10, 2010-11, 2011-12



Note: Academic includes tenure track and non-tenure track faculty appointments.