

## A Longitudinal View of Political Science Doctoral Student Placement, 2009-2012

Source: APSA Graduate Placement Survey, 2009-10, 2010-11, 2011-12

### AMERICAN POLITICAL SCIENCE ASSOCIATION

Summary: In [Snapshot: Three Years of Political Science Doctoral Student Placement](#), we present an overview of data on placement in political science from 2009-10 to 2011-2012. See Table 1 (below) for summary characteristics of job candidates. Here, we take a closer look at the data. While the data suggest notable variation in placement among different groups of job candidates over these three years, it is too soon to say if they are true patterns or idiosyncratic changes that will level out over time.

Gender and Placement. Placement in academic positions remained steady at about 60% for both female and male job candidates in each of the three years (Figure 1 and Table 2), figures that compare favorably with all doctorate recipients (<http://www.nsf.gov/statistics/sed/2011/pdf/tab47.pdf>) and with social science doctorate recipients (<http://www.nsf.gov/statistics/sed/2011/pdf/tab46.pdf>) reported in the 2011 NSF Earned Doctorate report. While both placed less frequently in post doc positions over time, the data show an increase in women placed in nonacademic positions with two times as many women as men in these positions by 2011-12 (Table 2). While female candidates experienced a fairly steady rate of unemployment, there was a dramatic increase from 2009-10 to 2011-12 in the proportion of male candidates not placed (Table 2). We do not know if this is explained by candidate self-selection for certain jobs or some other factor.

A closer look at academic placements reveals that both male and female candidates experienced a small decline in permanent academic placements from 2009-10 to 2011-12 (from 37% to 35% for women and 35% to 32% for men). Still, during this time the placement of women in PhD departments increased by 10% to reach the same level as men by 2011-12. At the same time, the proportion of women placed in BA programs declined by over 10%, again to reach the same level as men by 2011-12 (Figure 2 and Table 3).

Race, Ethnicity and Placement. We report race and ethnicity data with care because the number of African-American, Latina/o, Asian/Pacific Islander, and Native American job candidates is small. Still, it appears that a majority – and for African-Americans, nearly three quarters – of these candidates were faculty hires in 2011-12 (Figure 3 and Table 4), faring better than doctorate recipients reported in the 2011 NSF Earned Doctorate report (<http://www.nsf.gov/statistics/sed/2011/pdf/tab47.pdf>). Among those with permanent placements, it appears that African-American candidates experienced markedly greater success in placement in PhD programs from 2009-10 to 2011-12. Latina/os experienced a variable increase and Asian/Pacific Islanders a general decline in doctoral program placement over this same time (Figure 4 and Table 5).

Women of Color and Placement. In 2010-11, women of color (African-Americans, Latinas and Asian-Americans) were 13% of all women on the market, and 64% of all U.S. candidates of color on the market. In 2011-12, women of color were 10% of all women on the market, and 45% of all U.S. candidates of color on the market. Despite the decline, women of color placed better in the latter year insofar as all were employed, and more than a third (39%) were hired in permanent faculty positions compared to the previous year when a quarter (25%) were similarly placed.

## A Longitudinal View of Political Science Doctoral Student Placement, 2009-2012

Source: APSA Graduate Placement Survey, 2009-10, 2010-11, 2011-12

International Candidates and Placement. Among international candidates, there is a fairly consistent rate of placement over time in most categories *except* post doc positions, where a dramatic decline is evident across the three years; even so, nearly a third of the post doc positions were filled with international students in both 2010-11 and 2011-12 (Figure 3 and Table 4). At the same time, the data from 2011-12 indicate that over 20% of international job candidates (up from previous years) were not placed at all. In 2010-11, 52 foreign countries were represented on the job market, with South Korean candidates (13%) outnumbering all others; Turkish (10%), Chinese and Canadian candidates (each 7%) followed. In 2011-12, 48 foreign countries were represented, with Turkish (9.8%) and Canadian candidates (8.9%) leading the list. South Korean candidates were 5% of international job candidates that year, the same proportion as Germans and Mexicans.

Field of Study and Placement. Job candidates in the three major fields (American Politics, Comparative Politics, International Politics/Relations) experienced declines in academic placement since 2009; these losses appear not to have converted to different types of jobs but rather no placement at all (Figure 5, Table 6). This is most notably true for candidates in International Relations. Yet, among those candidates who placed in permanent academic positions, IR candidates found faculty positions in PhD programs more often over time than their American and Comparative colleagues (Figure 6, Table 7).

Dissertation Status and Placement. The data that show an increasing number of job candidates who went on the market without completing their degree were hired into faculty positions. By 2011-12, 57% of ABDs on the market were placed in academic positions (up from 43% in 2009) and 60% of candidates on the market with their completed degrees were placed in academic positions (down from 2009). Moreover, while more candidates *with their doctorates* than without were placed in permanent academic positions in PhD programs, a steadily increasing proportion of ABD candidates were similarly placed by 2011-12.

Time in Program. In 2010-11 and 2011-12, graduate directors were asked to provide program start dates for their job candidates. In each year, the average time in program for *all* job candidates was 7 years. On average, male, white, and IR candidates completed their programs in less time than their colleagues in 2010-11; the next year, Latina/os, African-Americans, and those studying American politics tended to finish before their colleagues, with little gender difference.

\*\*\*

About the Data: These data are from the 2009-10, 2010-11 and 2011-12 APSA Graduate Placement Surveys. Directors of Graduate Studies provide individual level information about doctoral students in their programs if they (1) competed seriously for academic or non-academic jobs during the academic year, whether or not they were placed; (2) sought their first placement in the academic year, in either academic or nonacademic positions; and/or, (3) were repeat players on the market because they had *not* placed in previous years. In 2009-10, 69 doctoral programs reported 501 students; in 2010-2011, 76 programs reported 600 students; and 2011-2012, 41 programs reported 327 students. These data are weighted by departmental faculty size, yielding the totals reported in Table 1. As a result of weighting, totals in other tables may not equal the figures in Table 1. With the 2010-11 survey, we changed the measurement for race and ethnicity to distinguish between International (non US citizens) candidates and US citizens of different ethnicity and race. We recoded the 2009-10 data to reflect this change for the purposes of comparison.

## **A Longitudinal View of Political Science Doctoral Student Placement, 2009-2012**

Source: APSA Graduate Placement Survey, 2009-10, 2010-11, 2011-12

Citation: American Political Science Association. 2013. "A Longitudinal View of Political Science Doctoral Student Placement, 2009-2012." (Updated June 2013)  
[http://www.apsanet.org/content\\_7623.cfm](http://www.apsanet.org/content_7623.cfm).

Also see [A Longitudinal Look at Political Science Job Postings in APSA e-Jobs](#) (June 2013).

## A Longitudinal View of Political Science Doctoral Student Placement, 2009-2012

Source: APSA Graduate Placement Survey, 2009-10, 2010-11, 2011-12

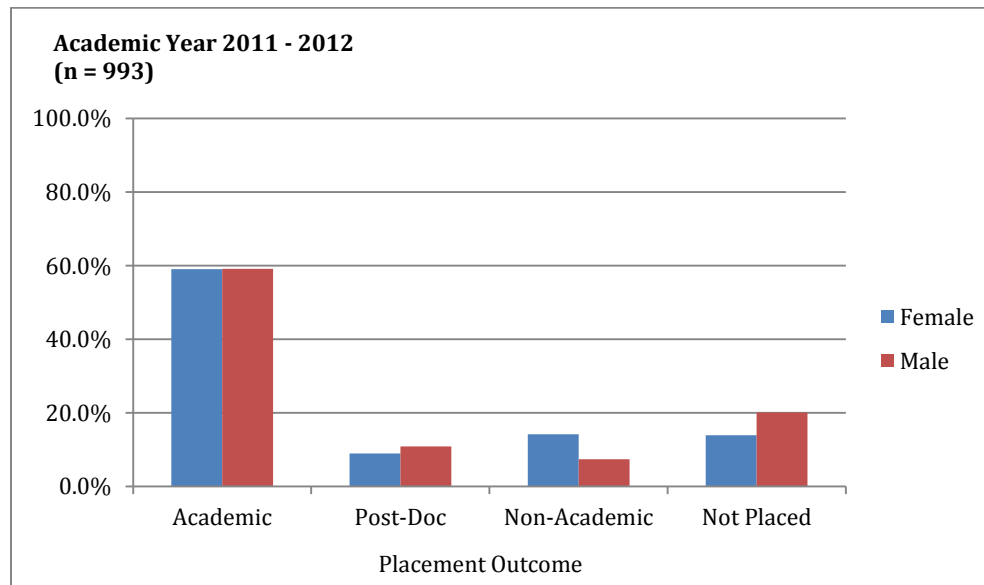
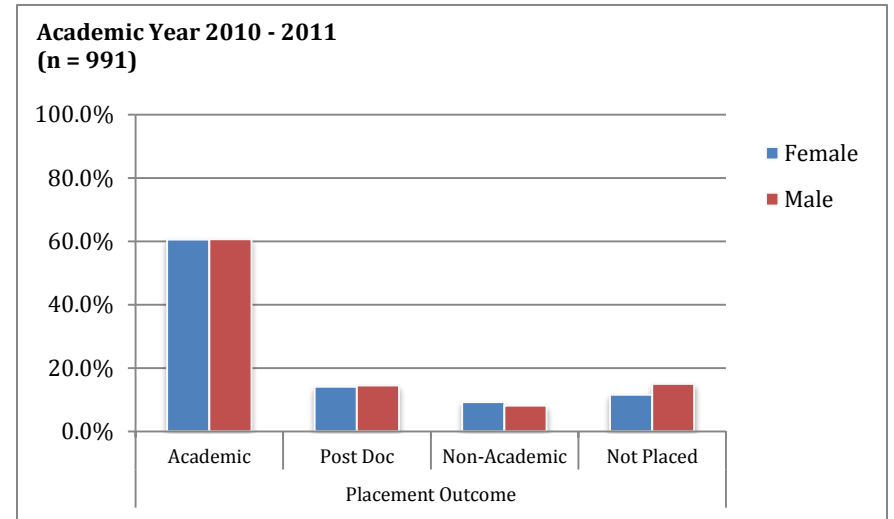
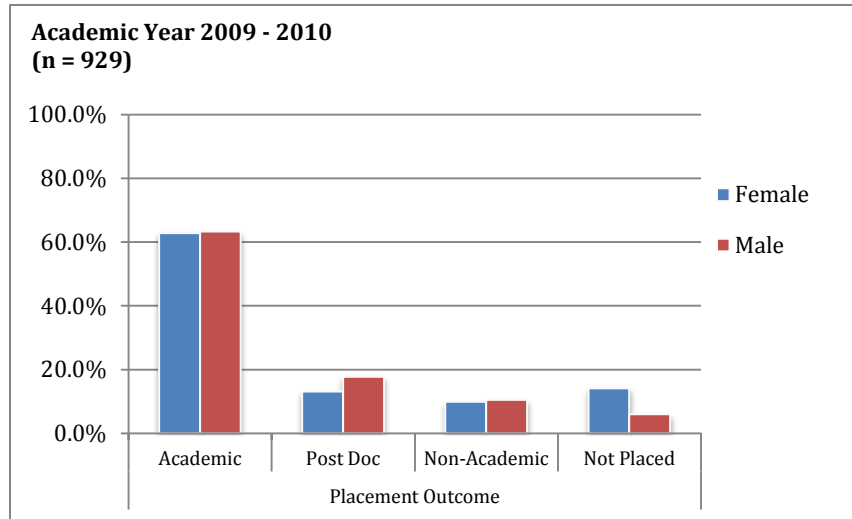
**Table 1: Characteristics of Job Market Candidates, 2009-10, 2010-11, 2011-12**

YEAR	2009-10 (n = 944)		2010-11 (n = 1025)		2011-12 (n = 1023)	
	n	%	n	%	n	%
<b>CHARACTERISTIC</b>						
<b>Gender</b>						
Female	374	39.6	441	43.4	388	37.9
Male	570	60.4	580	56.6	636	62.1
Not Reported	--	--	5	0.5	--	--
<b>Race/Ethnicity</b>						
African American	30	3.2	38	3.7	23	2.2
Am. Indian/AK Native	--	--	1	0.1	--	--
Asian/Pacific Islander	27	2.8	23	2.1	39	3.8
Caucasian	538	57.0	568	55.4	581	56.8
Latino/a	26	2.8	24	2.3	11	1.1
International	279	29.6	310	30.2	358	35.0
Two or More Races	--	--	2	0.2	7	0.7
Other	3	0.3	--	--	--	--
Not Reported	41	4.3	59	5.7	5	0.4
<b>Major Field</b>						
American Politics	178	18.8	214	20.9	210	20.5
Comparative Politics	290	30.7	341	33.3	276	26.9
International Politics	219	23.2	225	21.9	281	27.5
Methods	16	1.7	4	0.4	9	0.9
Political Philosophy	141	15.0	113	11.0	130	12.7
Public Administration	18	1.9	26	2.5	46	4.5
Public Law	7	0.7	27	2.6	24	2.3
Public Policy	30	3.1	30	2.9	19	1.8
Other	24	2.5	30	2.9	22	2.1
Not Reported	24	2.5	34	3.3	2	0.8
<b>Degree Earned</b>						
ABD	89	9.4	267	26.0	319	31.2
Ph.D.	855	90.6	730	71.2	690	67.4
Not Reported	--	--	28	2.8	12	1.4
<b>Repeat Candidate</b>						
No	606	64.1	744	72.6	669	65.3
Yes	270	28.6	225	22.0	237	23.2
Not Reported	68	7.2	56	5.4	93	9.1

# A Longitudinal View of Political Science Doctoral Student Placement, 2009-2012

Source: APSA Graduate Placement Survey, 2009-10, 2010-11, 2011-12

Figure 1. Placement by Gender\*



\*"Academic" includes both permanent and temporary positions

## A Longitudinal View of Political Science Doctoral Student Placement, 2009-2012

Source: APSA Graduate Placement Survey, 2009-10, 2010-11, 2011-12

**Table 2. Placement by Gender, 2009 - 10, 2010 - 11, 2011 - 12**

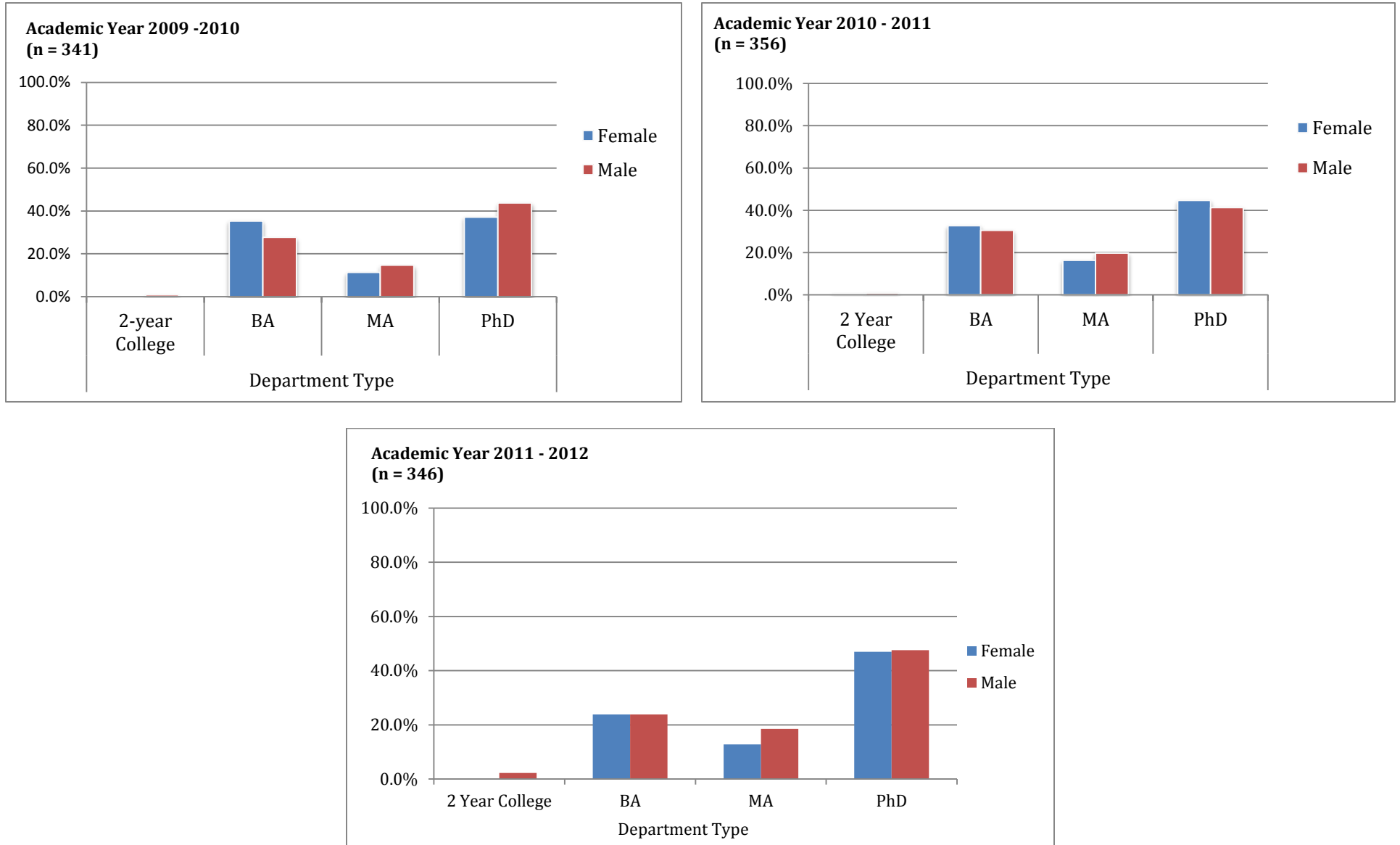
	2009 - 2010								2010 - 2011								2011 - 2012							
	Academic		Post Doc		Non-Academic		Not Placed		Academic		Post Doc		Non-Academic		Not Placed		Academic		Post Doc		Non-Academic		Not Placed	
	n	%	n	%	n	%	n	%	n	%	n	%	n	%	n	%	n	%	n	%	n	%	n	%
<b>Female</b>	235	62.8	49	13.1	37	9.9	53	14.2	267	60.5	62	14.1	41	9.3	51	11.6	229	59.0	35	9.0	55	14.2	54	13.9
<b>Male</b>	360	63.3	101	17.8	60	10.5	34	6.0	352	60.7	84	14.5	47	8.1	87	15.0	376	59.1	69	10.8	47	7.4	128	20.1

\*"Academic" includes both permanent and temporary positions

## A Longitudinal View of Political Science Doctoral Student Placement, 2009-2012

Source: APSA Graduate Placement Survey, 2009-10, 2010-11, 2011-12

**Figure 2. Department Type (Highest Degree Offered) by Gender, For Permanent Academic Placements\***



\*Not reported are permanent academic placements whose department types were unknown. As a result, percentages may not add to 100.

## A Longitudinal View of Political Science Doctoral Student Placement, 2009-2012

Source: APSA Graduate Placement Survey, 2009-10, 2010-11, 2011-12

**Table 3. Department Type (Highest Degree Offered) by Gender for Permanent Academic Placements, 2009 – 10, 2010 – 11, 2011 – 12\***

	2009 - 2010								2010 - 2011								2011 - 2012							
	2-year College		BA		MA		PhD		2 Year College		BA		MA		PhD		2 Year College		BA		MA		PhD	
	n	%	n	%	n	%	n	%	n	%	n	%	n	%	n	%	n	%	n	%	n	%	n	%
<b>Female</b>	0	0.0	59	35.3	19	11.4	62	37.1	1	0.6	52	32.7	26	16.4	71	44.7	0	0.0	39	23.8	21	12.8	77	47.0
<b>Male</b>	2	0.9	64	27.7	34	14.7	101	43.7	2	0.9	68	30.5	44	19.7	92	41.3	5	2.2	54	23.8	42	18.5	108	47.6

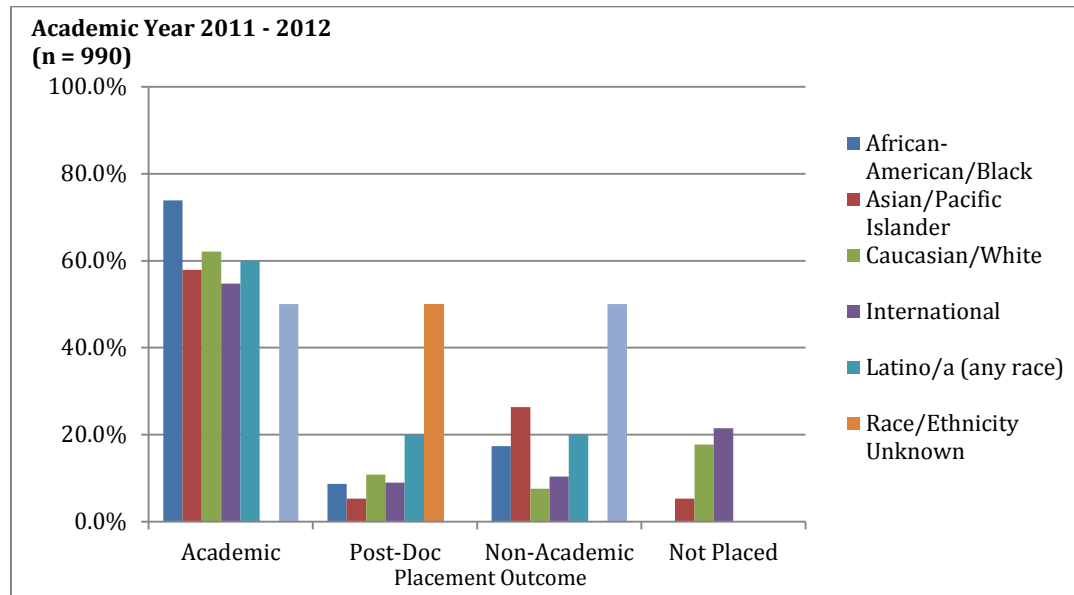
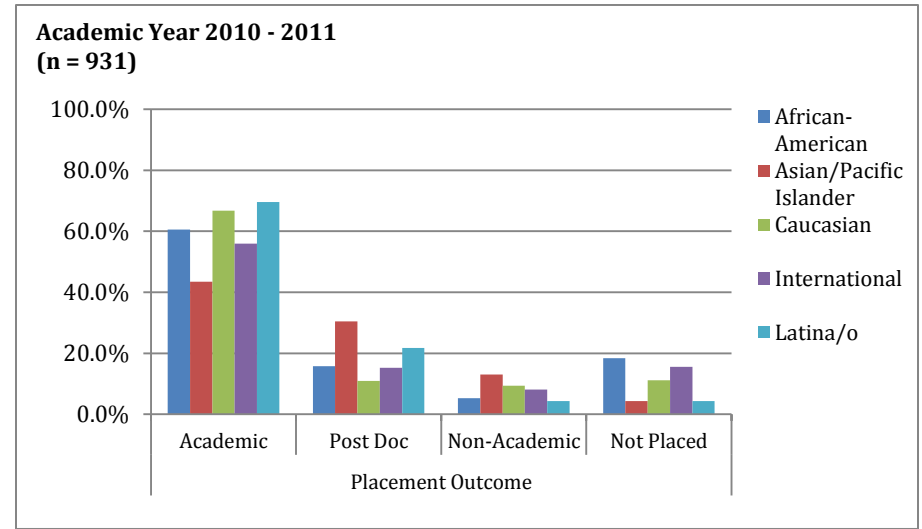
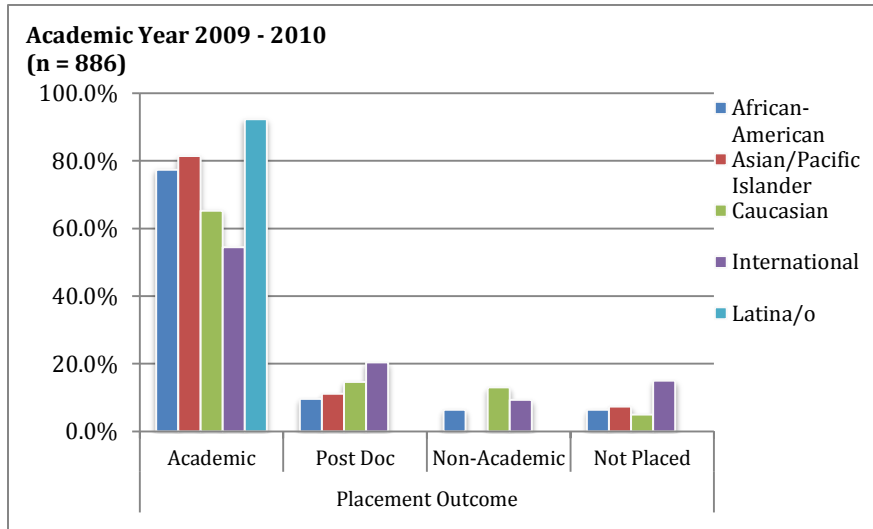
\*Not reported are permanent academic placements whose department types were unknown. As a result, percentages may not add to 100.



# A Longitudinal View of Political Science Doctoral Student Placement, 2009-2012

Source: APSA Graduate Placement Survey, 2009-10, 2010-11, 2011-12

Figure 3. Placement by Race & Ethnicity\*



\*"Academic" includes both permanent and temporary positions

## A Longitudinal View of Political Science Doctoral Student Placement, 2009-2012

Source: APSA Graduate Placement Survey, 2009-10, 2010-11, 2011-12

**Table 4. Placement by Race & Ethnicity, 2009 - 10, 2010 - 11, 2011 - 12**

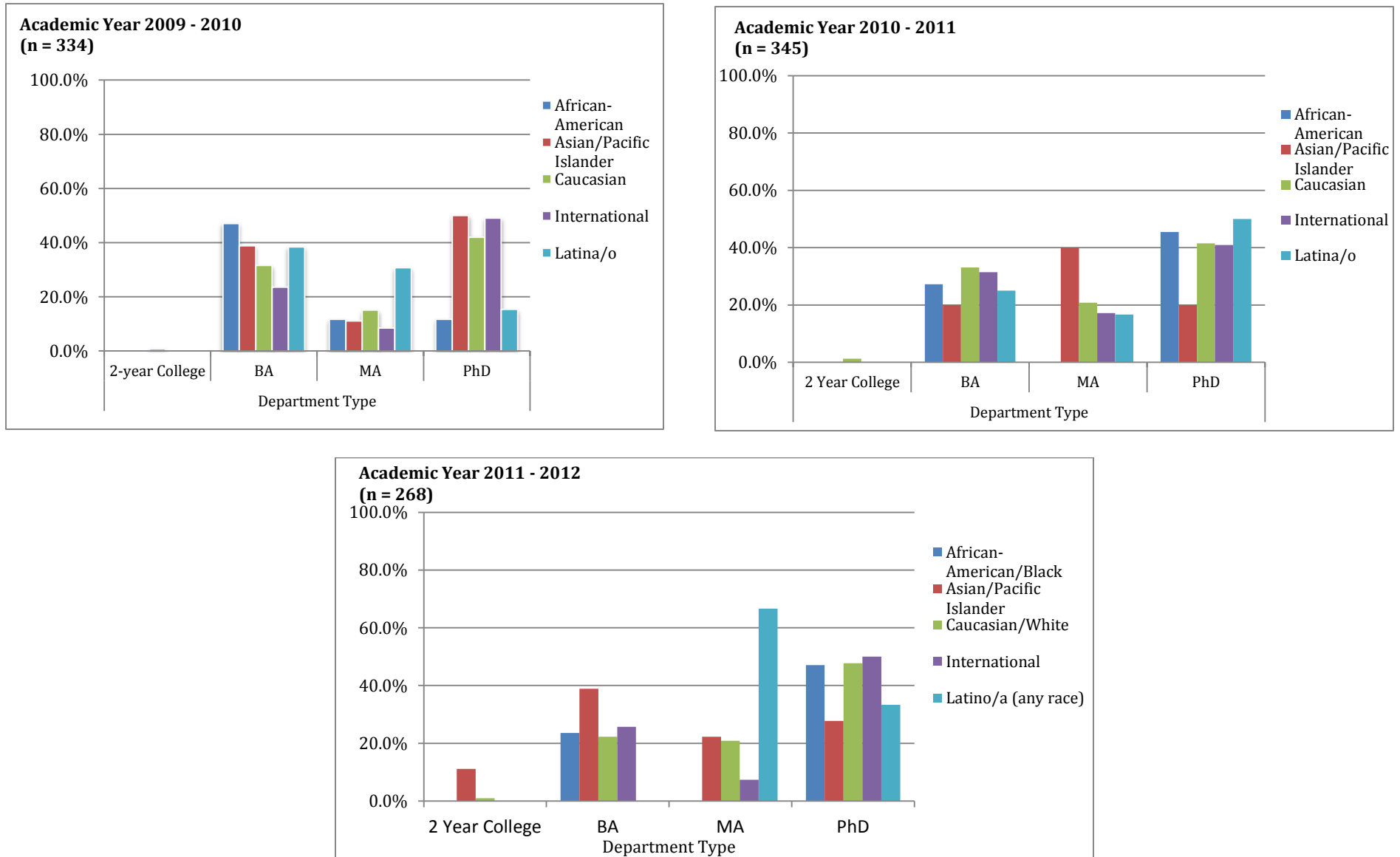
	2009 - 2010								2010 - 2011								2011 - 2012							
	Academic		Post Doc		Non-Academic		Not Placed		Academic		Post Doc		Non-Academic		Not Placed		Academic		Post Doc		Non-Academic		Not Placed	
<b>African-American</b>	24	77.4	3	9.7	2	6.5	2	6.5	23	60.5	6	15.8	2	5.3	7	18.4	17	73.9	2	8.7	4	17.4	0	0.0
<b>Am. Indian/AK Native</b>	0	0.0	0	0.0	0	0.0	0	0.0	0	0.0	1	100.0	0	0.0	0	0.0	0	0.0	0	0.0	0	0.0	0	0.0
<b>Asian/Pacific Islander</b>	22	81.5	3	11.1	0	0.0	2	7.4	10	43.5	7	30.4	3	13.0	1	4.3	22	57.9	2	5.3	10	26.3	2	5.3
<b>Caucasian</b>	351	65.2	79	14.7	70	13.0	27	5.0	378	66.8	62	11.0	53	9.4	63	11.1	361	62.1	63	10.8	44	7.6	103	17.7
<b>International</b>	152	54.5	57	20.4	26	9.3	42	15.1	173	56.0	47	15.2	25	8.1	48	15.5	196	54.7	32	8.9	37	10.3	77	21.5
<b>Latina/o</b>	24	92.3	0	0.0	0	0.0	0	0.0	16	69.6	5	21.7	1	4.3	1	4.3	6	60.0	2	20.0	2	20.0	0	0.0
<b>Other</b>	2	50.0	2	50.0	0	0.0	0	0.0	0	0.0	0	0.0	0	0.0	2	100.0	3	50.0	0	0.0	3	50.0	0	0.0
<b>Not Reported</b>	20	50.0	6	15.0	0	0.0	14	35.0	20	34.5	16	27.6	3	5.2	14	24.1	0	0.0	2	50.0	0	0.0	0	0.0

\*"Academic" includes both permanent and temporary positions

## A Longitudinal View of Political Science Doctoral Student Placement, 2009-2012

Source: APSA Graduate Placement Survey, 2009-10, 2010-11, 2011-12

**Figure 4. Department Type by Race & Ethnicity, for Permanent Academic Placements\***



\*Not reported are permanent academic placements whose department types were unknown. As a result, percentages may not add to 100.

## A Longitudinal View of Political Science Doctoral Student Placement, 2009-2012

Source: APSA Graduate Placement Survey, 2009-10, 2010-11, 2011-12

**Table 5. Department Type by Race & Ethnicity, for Permanent Academic Placements, 2009 - 10, 2010 - 11, 2011 - 12\***

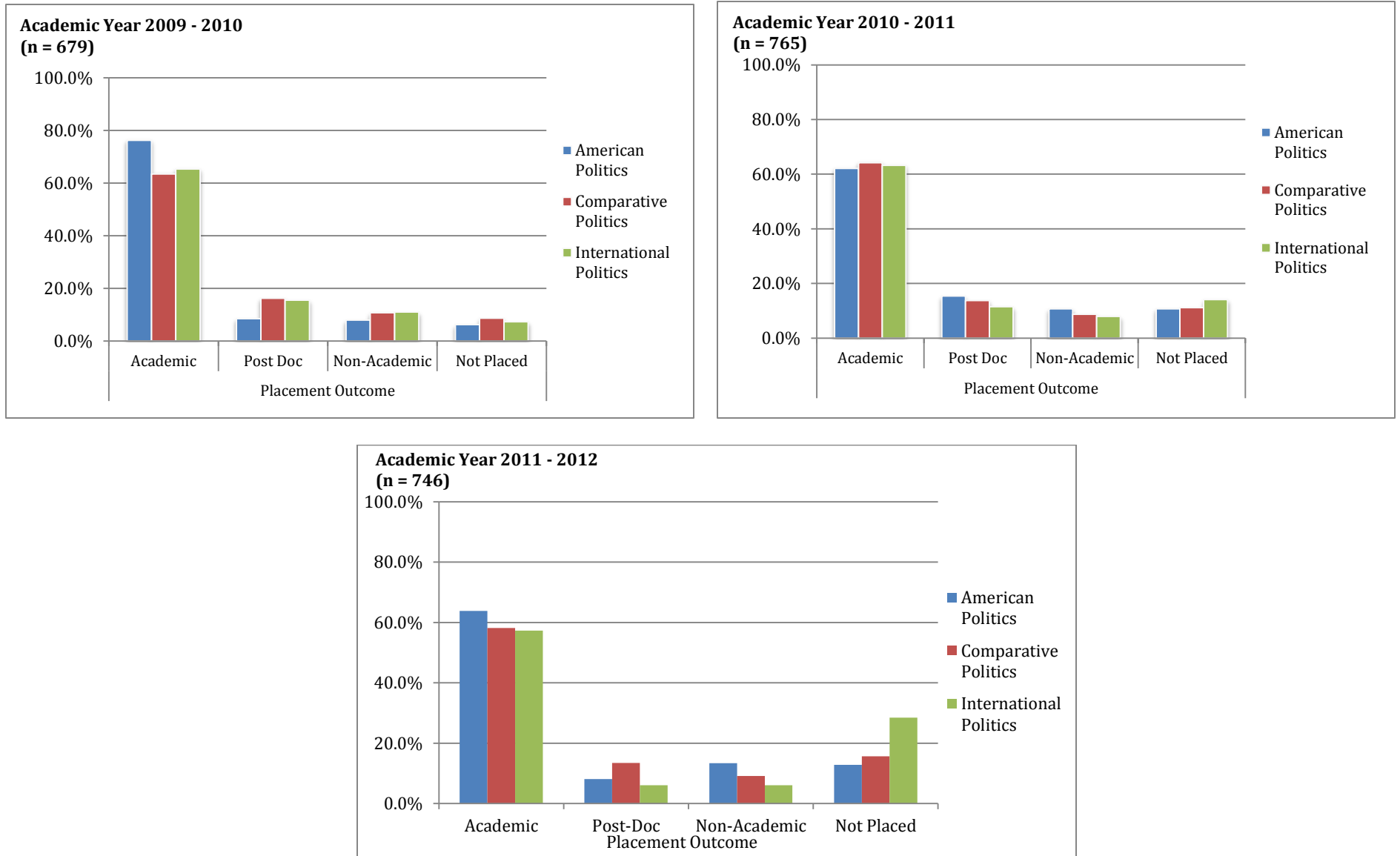
	2009 - 2010								2010 - 2011								2011 - 2012							
	2-year College		BA		MA		PhD		2 Year College		BA		MA		PhD		2 Year College		BA		MA		PhD	
	n	%	n	%	n	%	n	%	n	%	n	%	n	%	n	%	n	%	n	%	n	%	n	%
<b>African-American</b>	0	0.0	8	47.1	2	11.8	2	11.8	0	0.0	3	27.3	0	0.0	5	45.5	0	0.0	4	23.5	0	0.0	8	47.1
<b>Asian/Pacific Islander</b>	0	0.0	7	38.9	2	11.1	9	50.0	0	0.0	1	20.0	2	40.0	1	20.0	2	11.1	7	38.9	4	22.2	5	27.8
<b>Caucasian</b>	2	0.9	73	31.6	35	15.2	97	42.0	3	1.3	78	33.1	49	20.8	98	41.5	2	0.9	48	22.2	45	20.8	103	47.7
<b>International</b>	0	0.0	25	23.6	9	8.5	52	49.1	0	0.0	33	31.4	18	17.1	43	41.0	0	0.0	35	25.7	10	7.4	68	50.0
<b>Latina/o</b>	0	0.0	5	38.5	4	30.8	2	15.4	0	0.0	3	25.0	2	16.7	6	50.0	0	0.0	0	0.0	4	66.7	2	33.3
<b>Other</b>	0	0.0	0	0.0	0	0.0	2	100.0	0	0.0	0	0.0	0	0.0	0	0.0	0	0.0	0	0.0	0	0.0	0	0.0
<b>Not Reported</b>	0	0.0	5	45.5	0	0.0	0	0.0	0	0.0	2	14.3	0	0.0	9	64.3	0	0.0	0	0.0	0	0.0	0	0.0

\*Not reported are permanent academic placements whose department types were unknown. As a result, percentages may not add to 100.

# A Longitudinal View of Political Science Doctoral Student Placement, 2009-2012

Source: APSA Graduate Placement Survey, 2009-10, 2010-11, 2011-12

Figure 5. Placement by Three Major Fields\*



\*"Academic" includes both permanent and temporary positions

## A Longitudinal View of Political Science Doctoral Student Placement, 2009-2012

Source: APSA Graduate Placement Survey, 2009-10, 2010-11, 2011-12

**Table 6. Placement by Field, 2009 - 10, 2010 - 11, 2011 - 12**

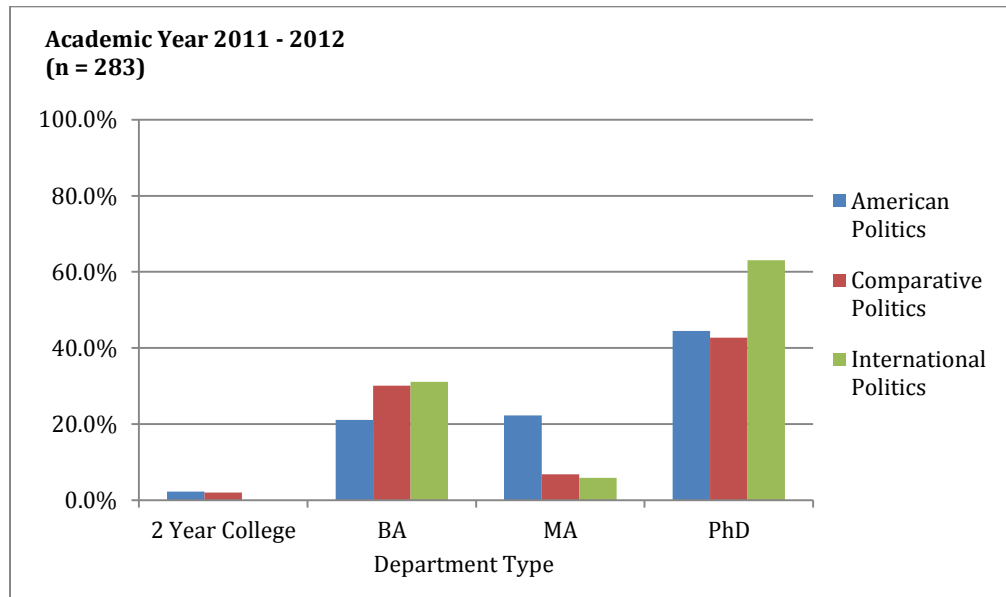
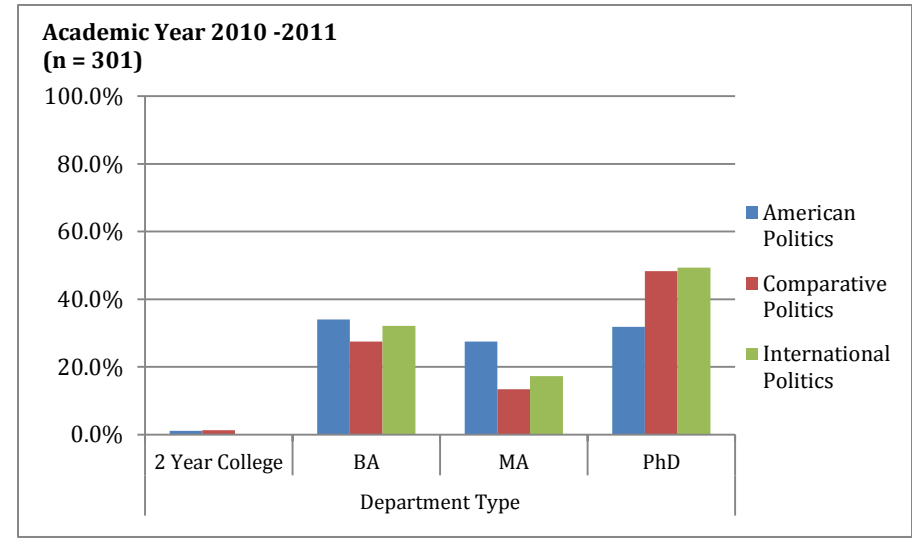
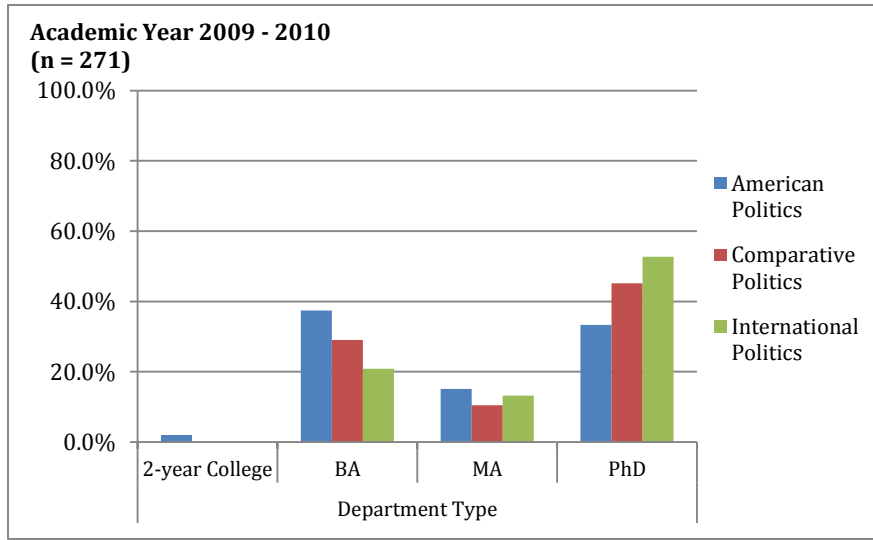
	2009 - 2010								2010 - 2011								2011 - 2012							
	Academic		Post-Doc		Non-Academic		Not Placed		Academic		Post-Doc		Non-Academic		Not Placed		Academic		Post-Doc		Non-Academic		Not Placed	
	n	%	n	%	n	%	n	%	n	%	n	%	n	%	n	%	n	%	n	%	n	%	n	%
<b>American Politics</b>	135	76.3	15	8.5	14	7.9	11	6.2	133	62.1	33	15.4	23	10.7	23	10.7	127	65.5	18	9.3	13	6.7	32	16.5
<b>Comparative Politics</b>	184	63.4	47	16.2	31	10.7	25	8.6	219	64.2	47	13.8	30	8.8	38	11.1	140	59.1	26	11.0	17	7.2	43	18.1
<b>International Politics</b>	143	65.3	34	15.5	24	11.0	16	7.3	143	63.3	26	11.5	18	8.0	32	14.2	167	58.0	13	4.5	18	6.3	83	28.8
<b>Methods</b>	12	75.0	4	25.0	0	0.0	0	0.0	4	100.0	0	0.0	0	0.0	0	0.0	10	76.9	3	23.1	0	0.0	0	0.0
<b>Other</b>	9	39.1	5	21.7	2	8.7	2	8.7	17	58.6	3	10.3	3	10.3	6	20.7	13	61.9	0	0.0	4	19.0	0	0.0
<b>Political Philosophy</b>	64	45.1	43	30.3	15	10.6	20	14.1	53	47.3	33	29.5	1	0.9	23	20.5	48	49.5	18	18.6	10	10.3	21	21.6
<b>Public Administration</b>	12	66.7	2	11.1	4	22.2	0	0.0	18	72.0	0	0.0	5	20.0	2	8.0	29	59.2	0	0.0	20	40.8	0	0.0
<b>Public Law</b>	5	71.4	0	0.0	0	0.0	0	0.0	23	85.2	0	0.0	2	7.4	2	7.4	14	82.4	0	0.0	0	0.0	3	17.6
<b>Public Policy</b>	23	76.7	0	0.0	7	23.3	0	0.0	4	33.3	0	0.0	2	16.7	4	33.3	8	66.7	0	0.0	0	0.0	4	33.3

\*"Academic" includes both permanent and temporary positions

## A Longitudinal View of Political Science Doctoral Student Placement, 2009-2012

Source: APSA Graduate Placement Survey, 2009-10, 2010-11, 2011-12

**Figure 6. Department Type by Three Major Fields, for Permanent Academic Placements\***



\*Not reported are permanent academic placements whose department types were unknown. As a result, percentages may not add to 100.

## A Longitudinal View of Political Science Doctoral Student Placement, 2009-2012

Source: APSA Graduate Placement Survey, 2009-10, 2010-11, 2011-12

**Table 7. Department Type by Field, For Permanent Academic Placements, 2009 - 10, 2010 - 11, 2011 - 12\***

	2009 - 2010								2010 - 2011								2011 - 2012							
	2 Year College		BA		MA		PhD		2 Year College		BA Institution		MA Institution		PhD Institution		2 Year College		BA Institution		MA Institution		PhD Institution	
	n	%	n	%	n	%	n	%	n	%	n	%	n	%	n	%	n	%	n	%	n	%	n	%
<b>American Politics</b>	2	2.0	37	37.4	15	15.2	33	33.3	1	1.1	31	34.1	25	27.5	29	31.9	2	2.2	19	21.1	20	22.2	40	44.4
<b>Comparative Politics</b>	0	0.0	36	29.0	13	10.5	56	45.2	2	1.3	41	27.5	20	13.4	72	48.3	2	1.9	31	30.1	7	6.8	44	42.7
<b>International Politics</b>	0	0.0	19	20.9	12	13.2	48	52.7	0	0.0	26	32.1	14	17.3	40	49.4	0	0.0	32	31.1	6	5.8	65	63.1
<b>Methods</b>	0	0.0	0	0.0	0	0.0	10	100.0	0	0.0	0	0.0	0	0.0	1	50.0	0	0.0	0	0.0	0	0.0	7	100.0
<b>Other</b>	0	0.0	2	33.3	0	0.0	2	33.3	0	0.0	3	30.0	4	40.0	3	30.0	0	0.0	0	0.0	0	0.0	3	100.0
<b>Political Philosophy</b>	0	0.0	20	52.6	2	5.3	11	28.9	0	0.0	9	42.9	0	0.0	8	38.1	0	0.0	8	29.6	3	11.1	11	40.7
<b>Public Administration</b>	0	0.0	0	0.0	0	0.0	2	28.6	0	0.0	5	35.7	4	28.6	5	35.7	0	0.0	4	16.7	13	54.2	7	29.2
<b>Public Law</b>	0	0.0	2	33.3	2	33.3	2	33.3	0	0.0	2	16.7	4	33.3	5	41.7	0	0.0	0	0.0	10	55.6	3	16.7
<b>Public Policy</b>	0	0.0	7	46.7	6	40.0	0	0.0	0	0.0	2	50.0	2	50.0	0	0.0	0	0.0	0	0.0	4	50.0	4	50.0

\*Not reported are permanent academic placements whose department types were unknown. As a result, percentages may not add to 100.