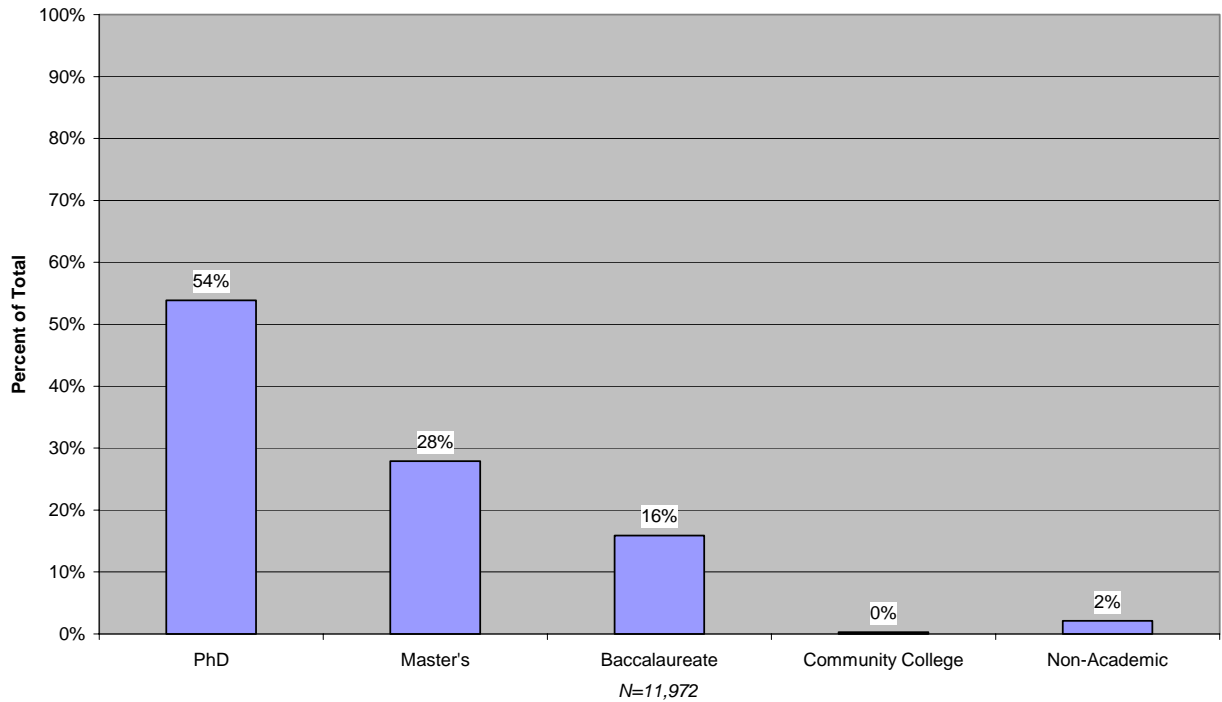


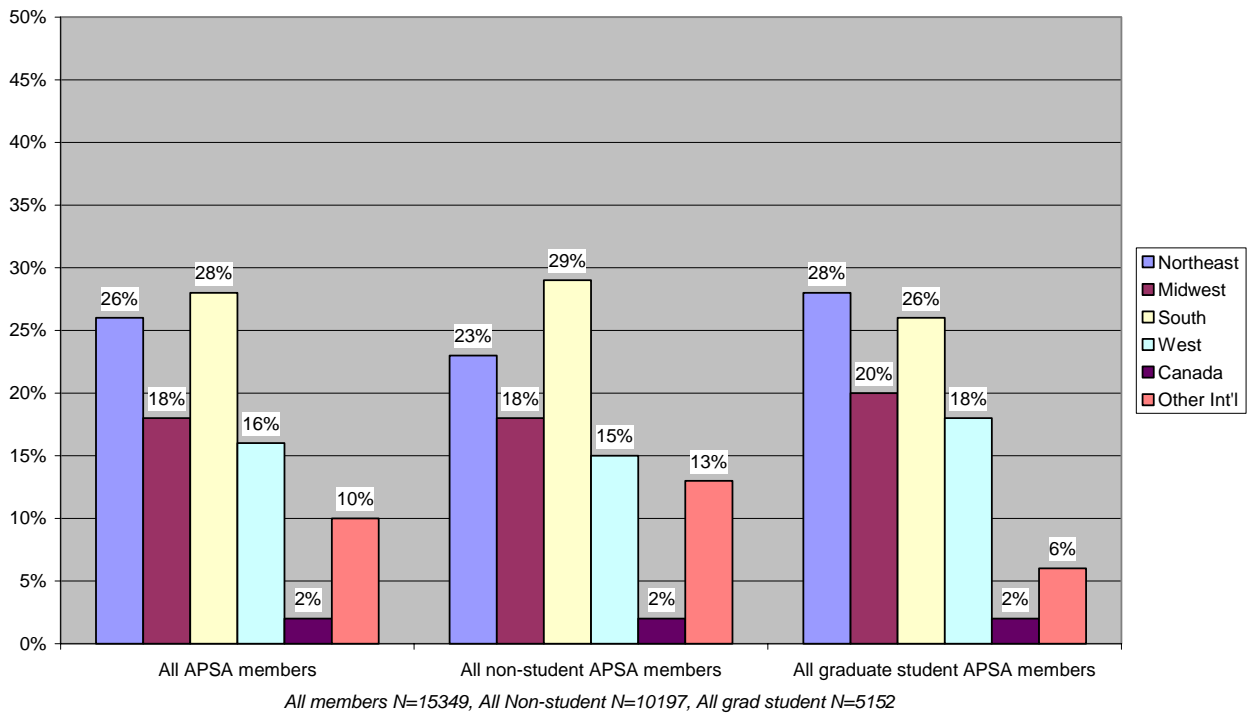
I. A. Current APSA Members

Chart I. A. 1:  
Institution Type of Current, Active\*, Non-Student APSA Members

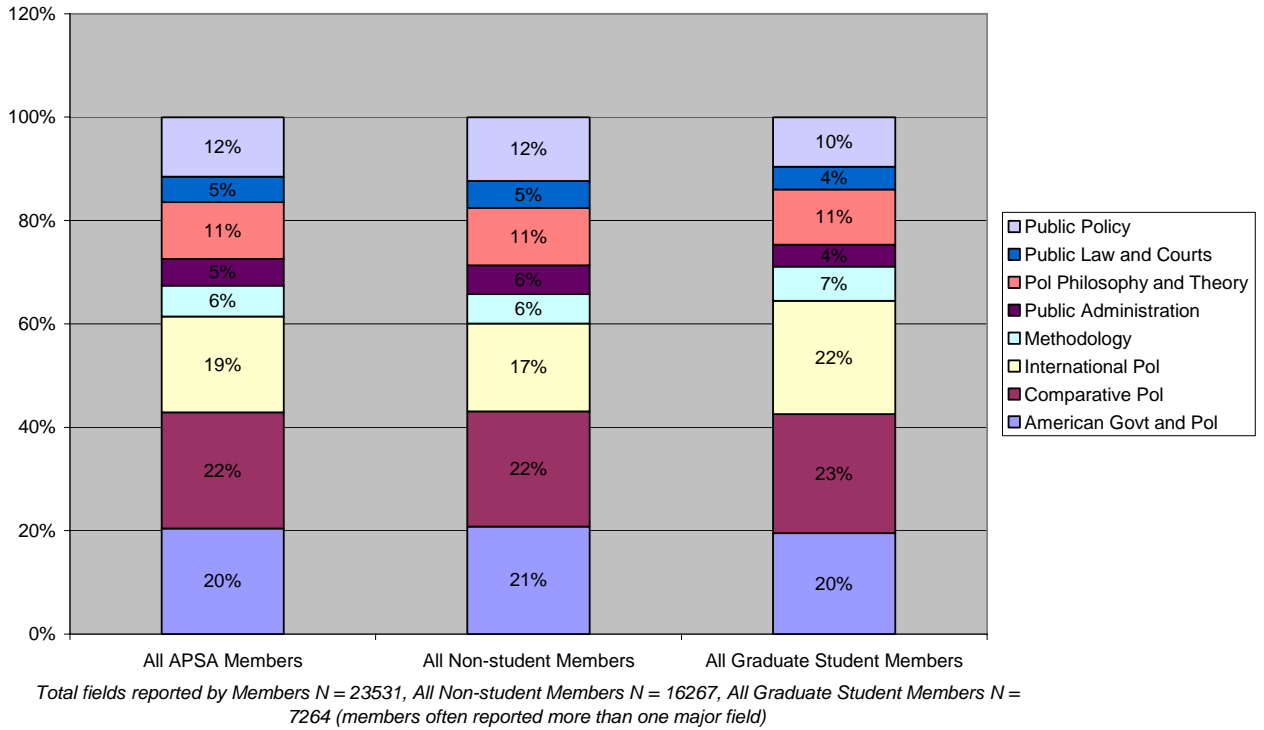


\*Excludes retired members

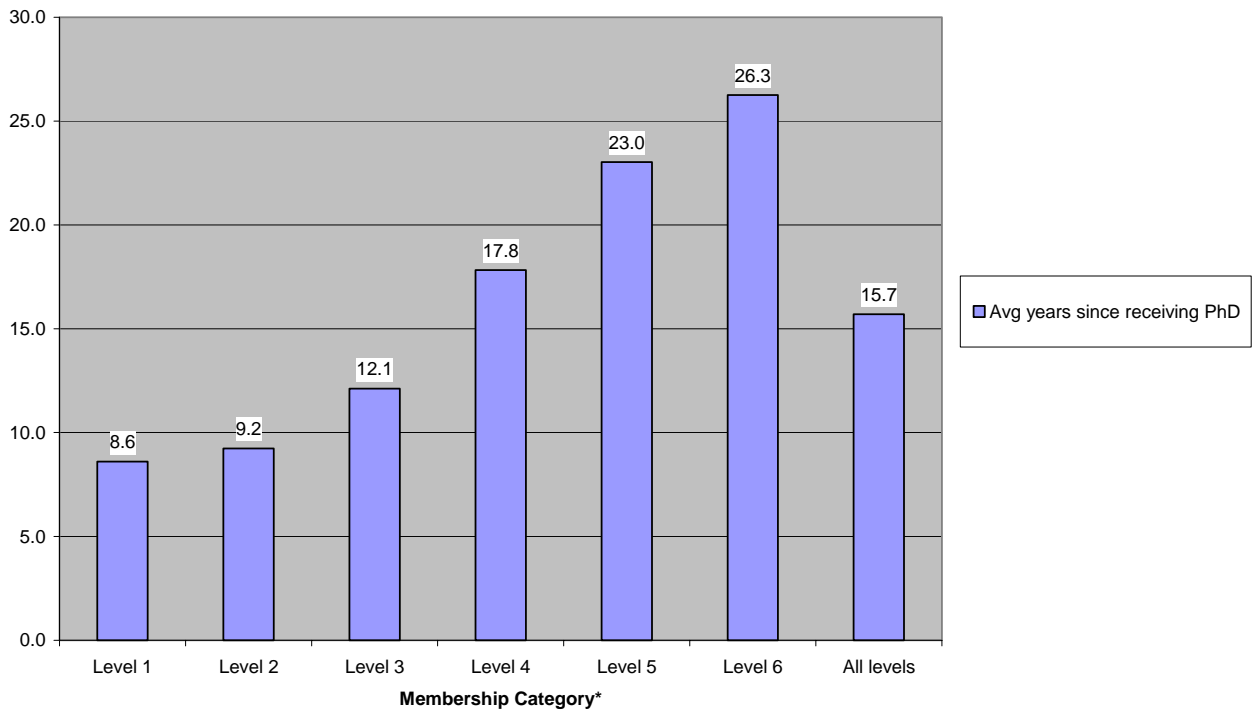
Chart I. A. 2:  
Regional Distribution of Current APSA Members



**Chart I. A. 3:  
Distribution of Major Fields, Current APSA Members**

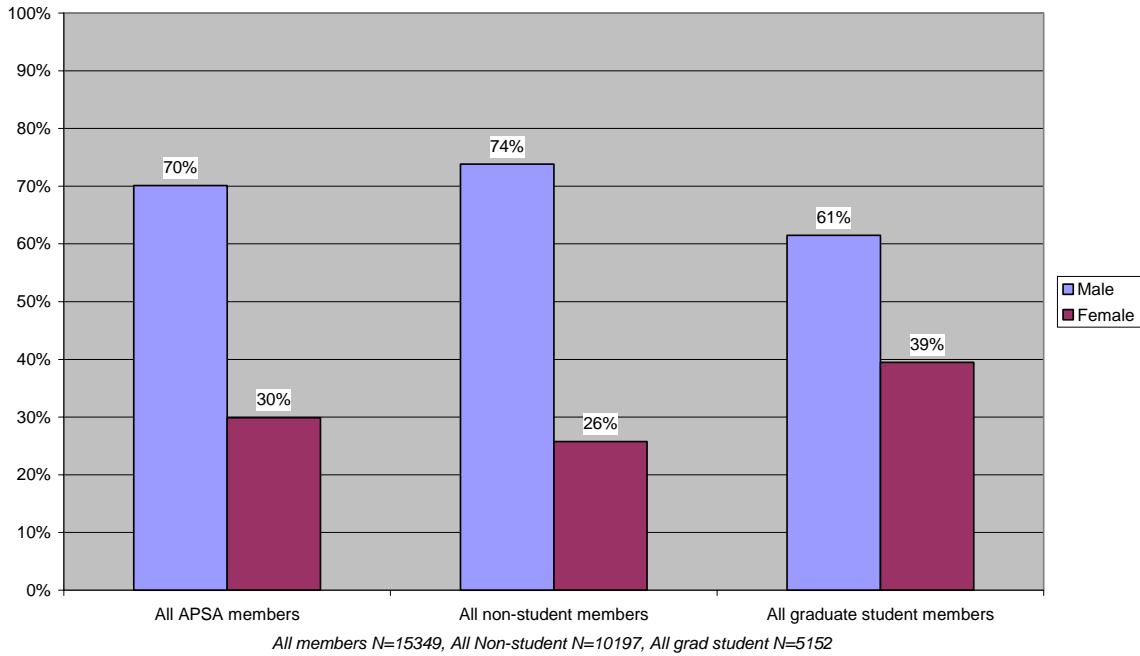


**Chart I. A. 4:  
Average Years since PhD received, Regular APSA Members**

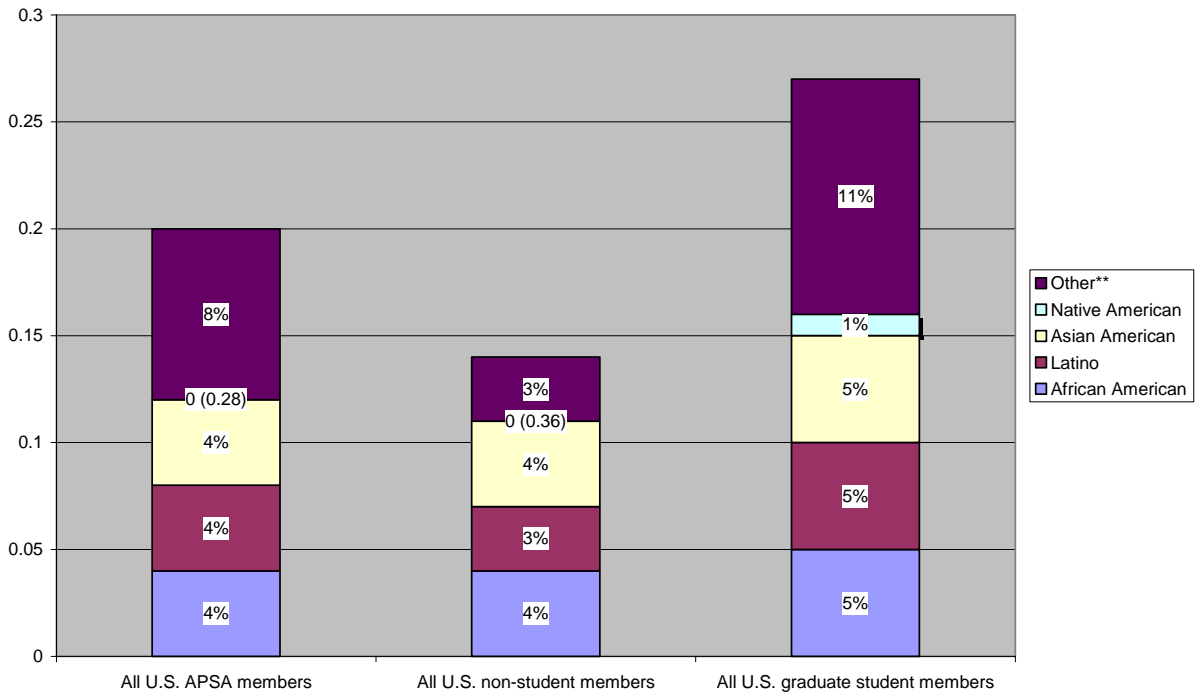


\*Membership categories refer to various income levels.

**Chart I. A. 5:  
Gender Distribution of Current APSA Members**



**Chart I. A. 6:  
Ethnicity Distribution of Current APSA Members in U.S.\***

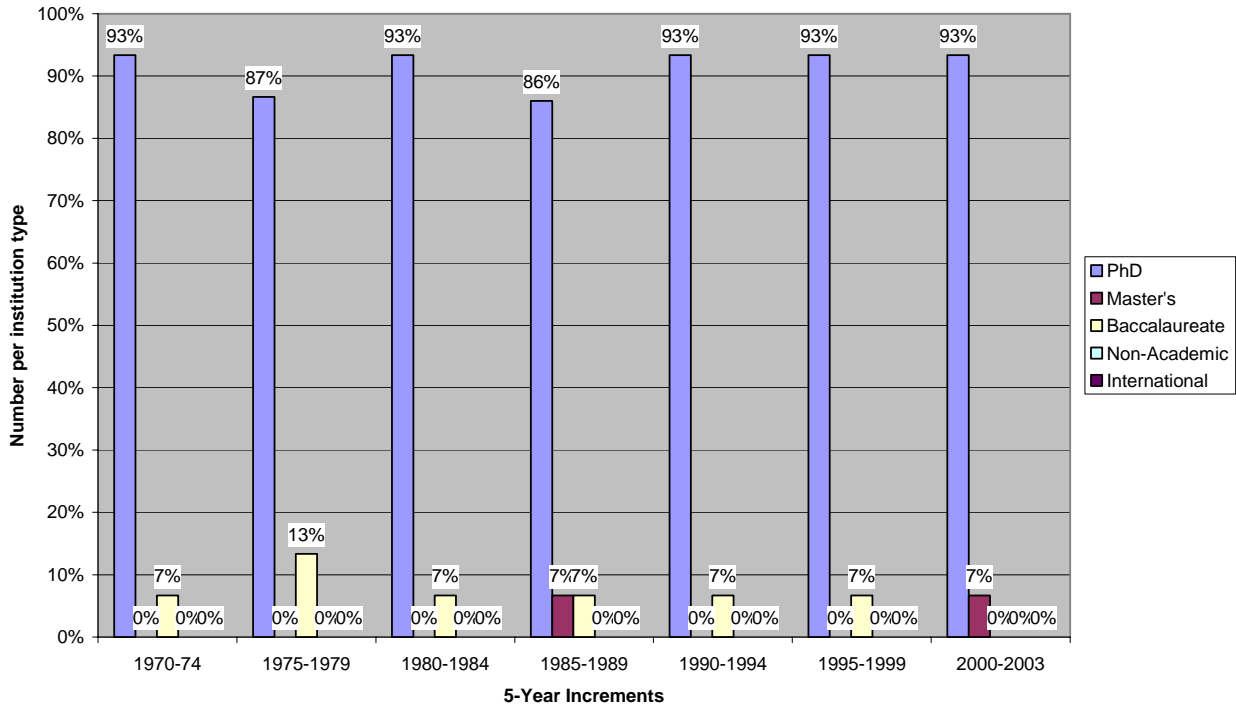


\*Data represents current APSA members in the U.S. Non-U.S. members are excluded.  
(All U.S. members N = 9620, All U.S. Non-student N = 6617, All U.S. grad student N = 3003)

\*\*The category "Other" is self-described. Caucasian members make up the remaining percentages.

II. A. Nominating Committee

Chart II. A. 1: Type of Institution\*, Nominating Committee  
1970-2003



\*All Institution types refer to the Carnegie classifications unless noted as international or non-academic.

Chart II. A. 2: Regional Distribution, Nominating Committee  
1970-2003

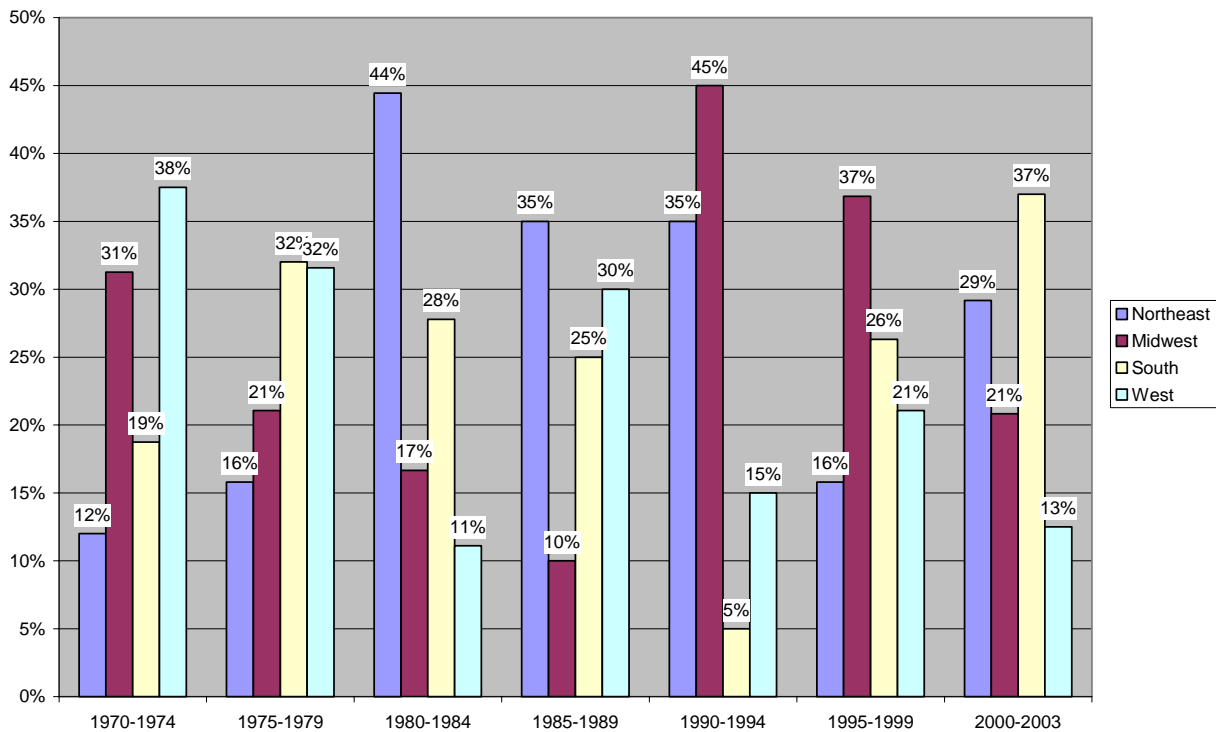


Chart II. A. 3: Distribution of Major Fields, Nominating Committee, 1970-2003

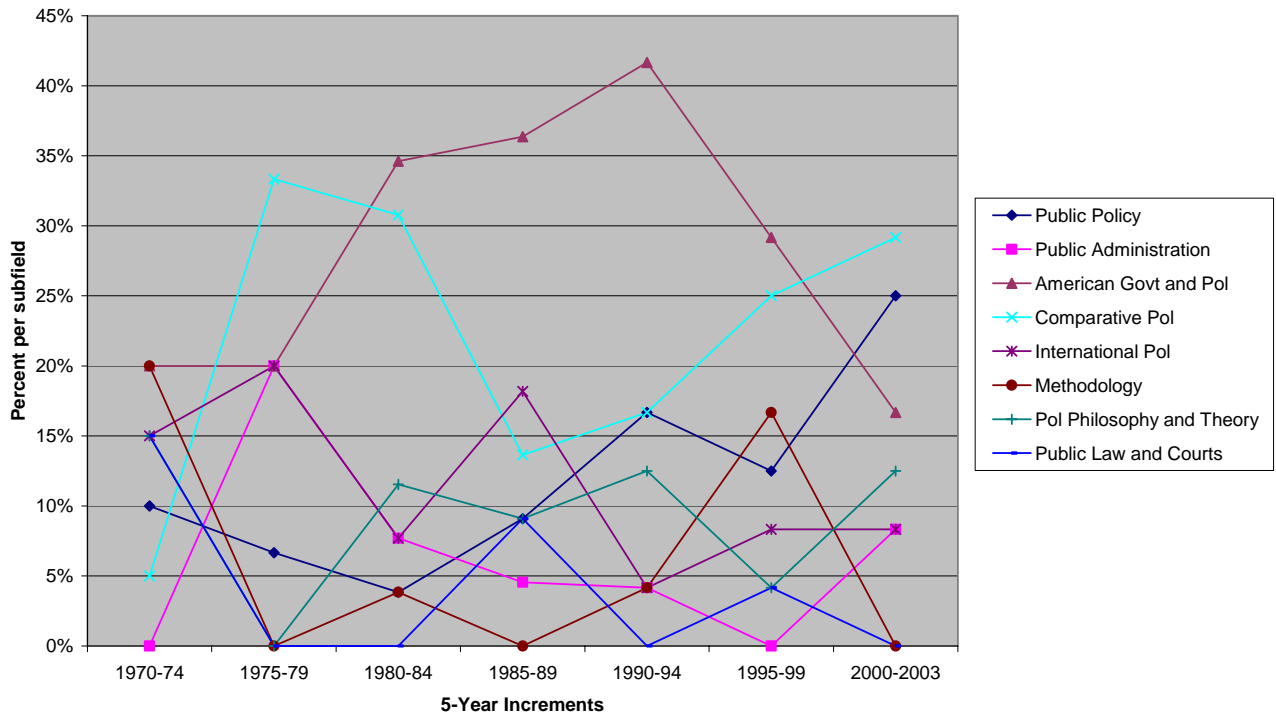


Chart II. A. 4: Average years since PhD received, Nominating Committee 1970-2003

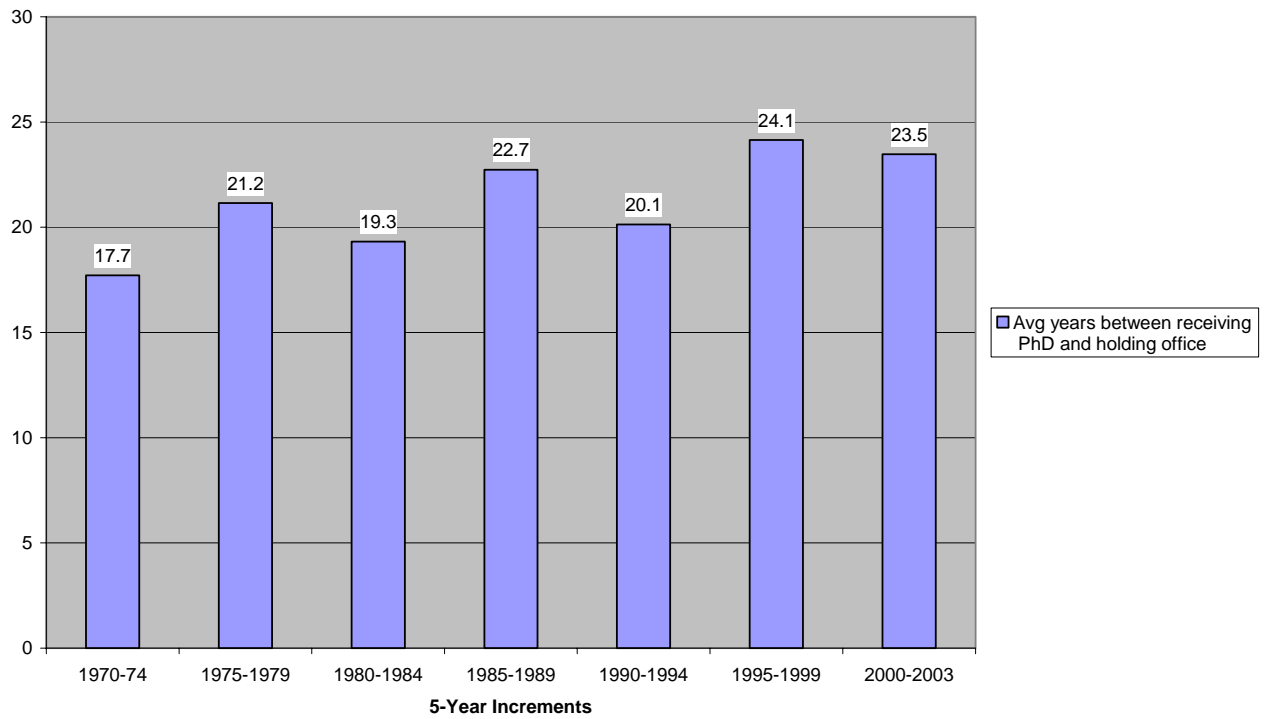


Chart II. A. 5: Gender Distribution, Nominating Committee  
1970-2003

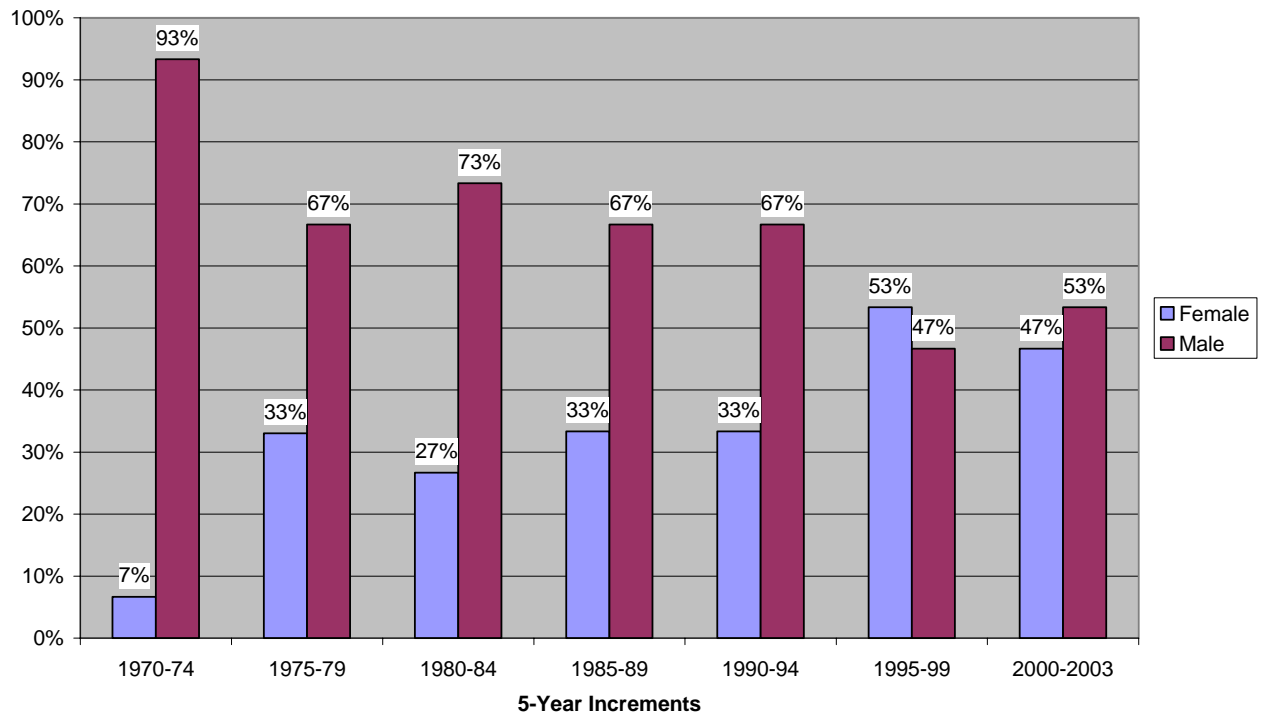
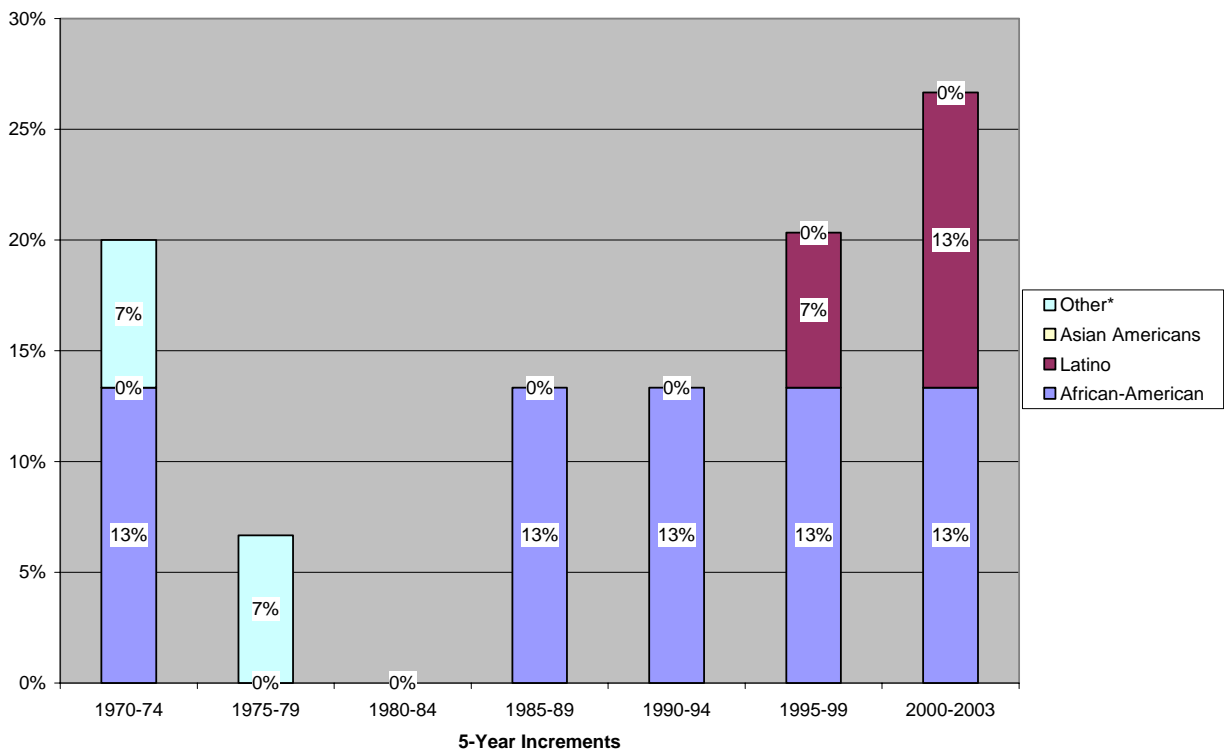
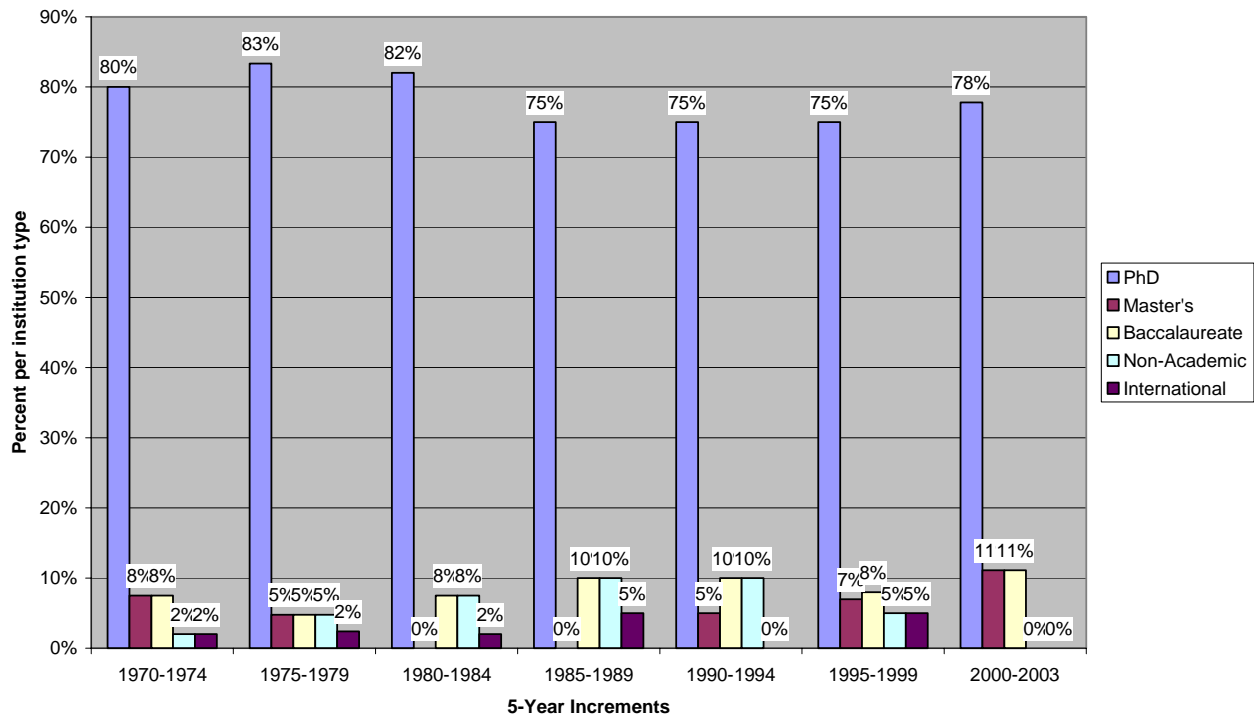


Chart II. A. 6: Race/Ethnicity Distribution, Nominating Committee  
1970-2003



\*The category "Other" is self-described.

Chart II. B. 1: Type of Institution\*, Council  
1970-2003



\*All institution types refer to the Carnegie classifications unless noted as international or non-academic.

Chart II. B. 2:  
Regional Distribution, Council 1970-2003

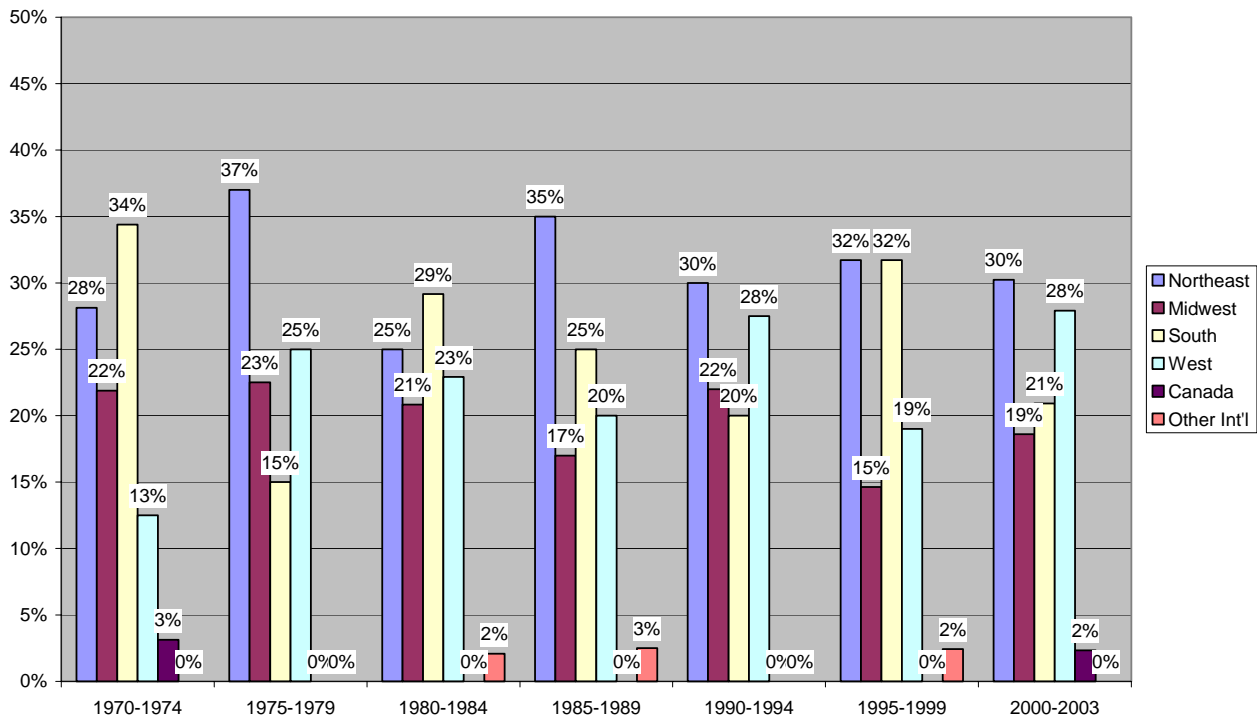


Chart II. B. 3: Distribution of Major Fields, Council  
1970-2003

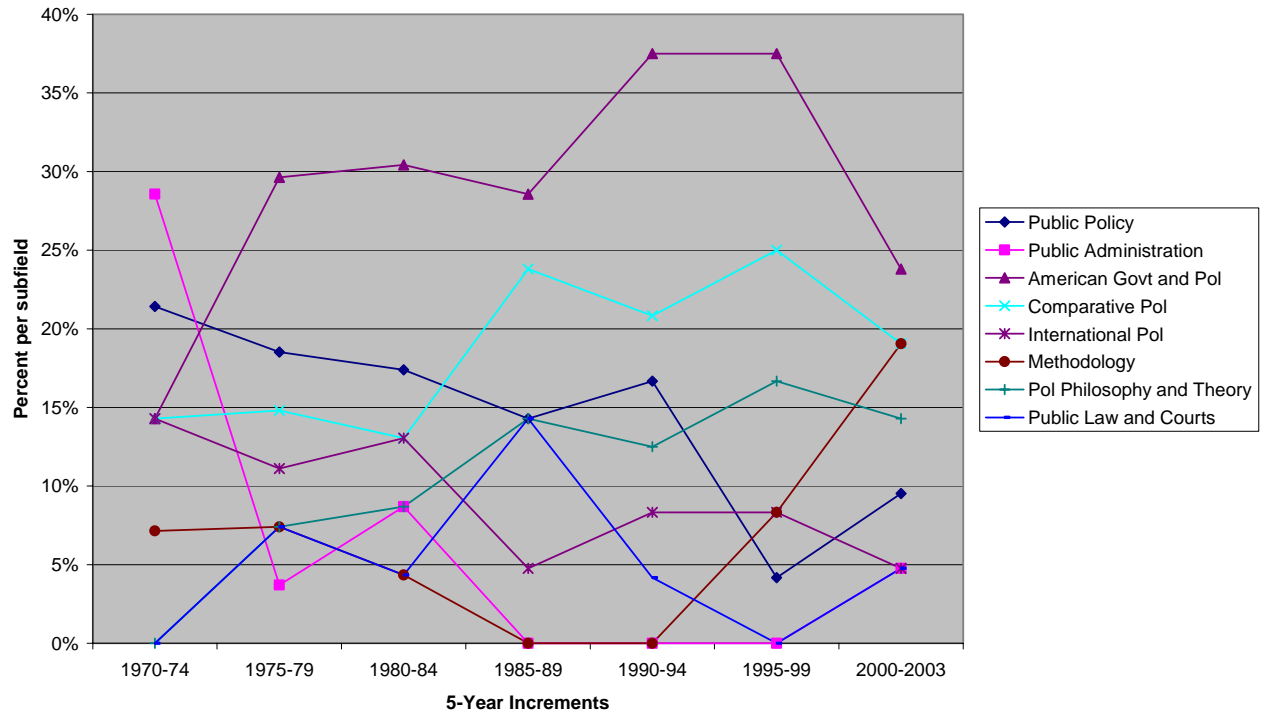
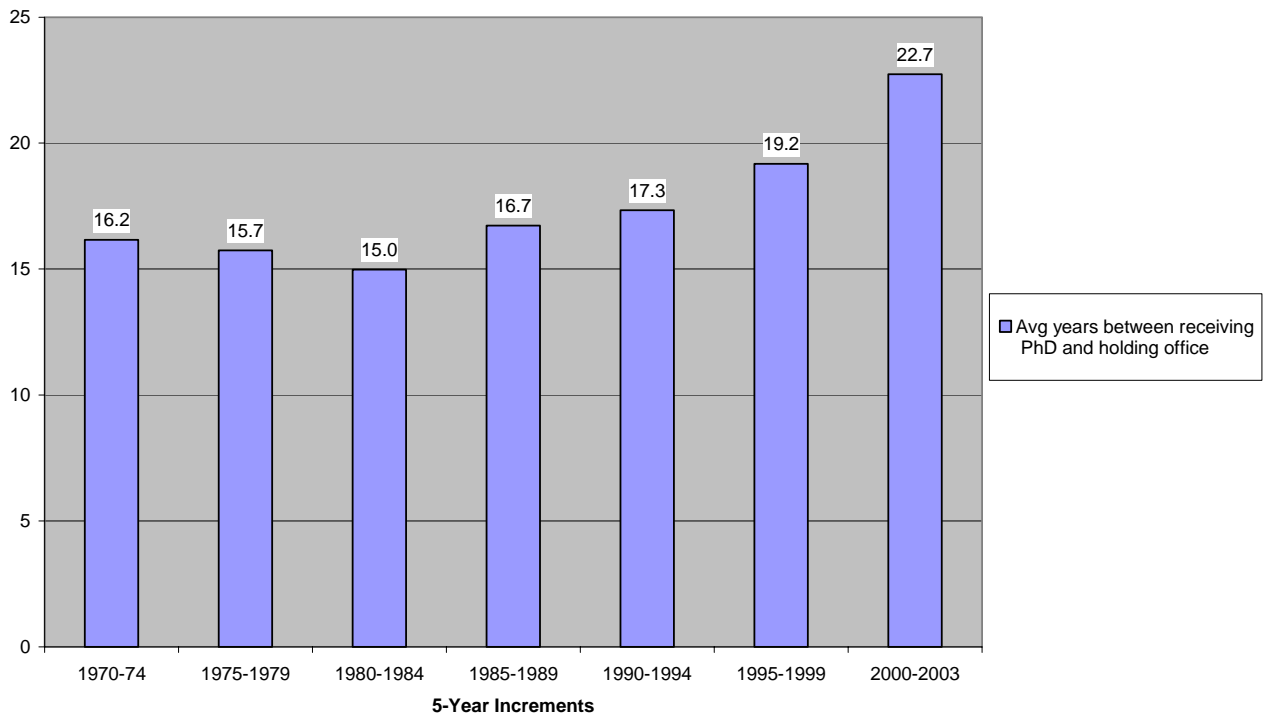
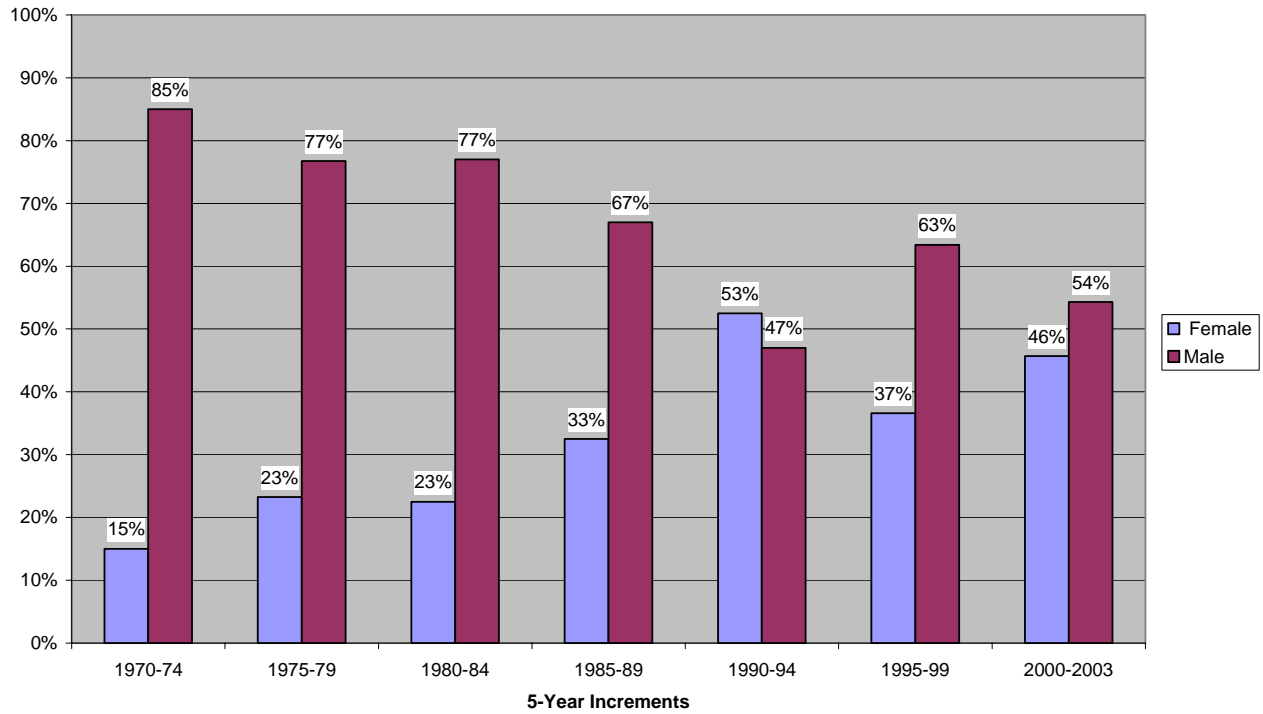


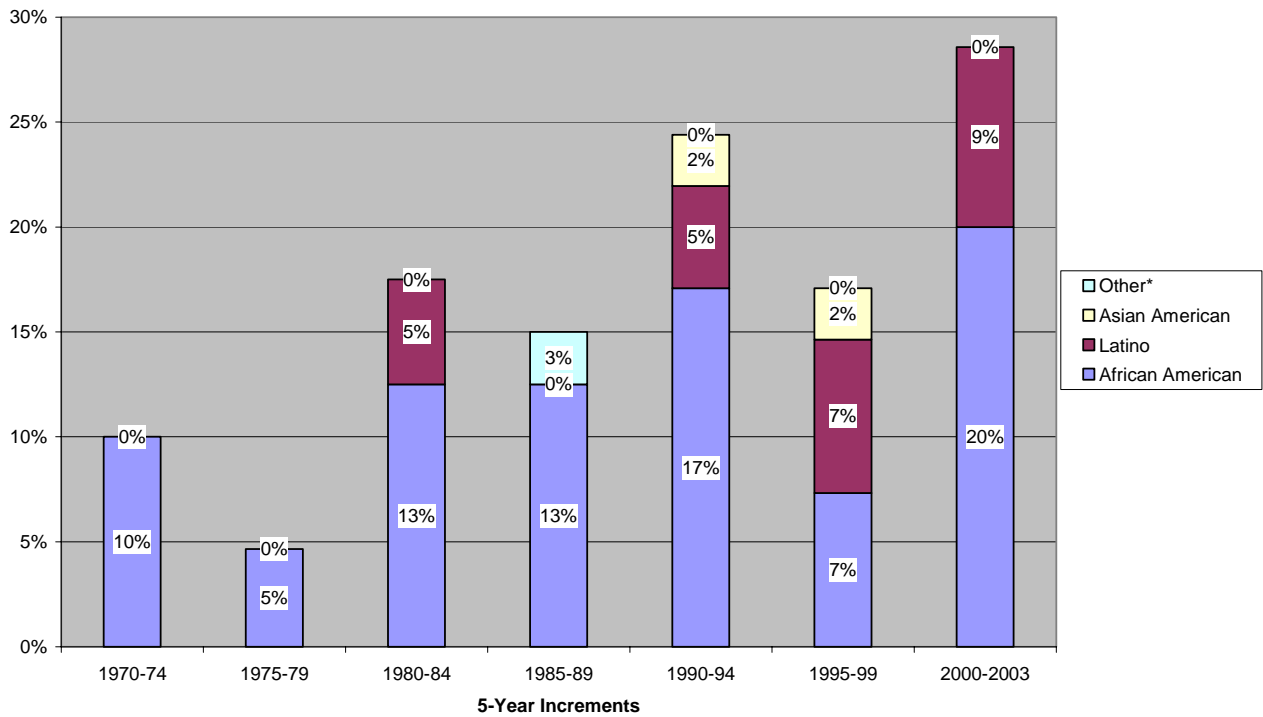
Chart II. B. 4: Average years since PhD received, Council  
1970-2003



**Chart II. B. 5:  
Gender Distribution, Council  
1970-2003**



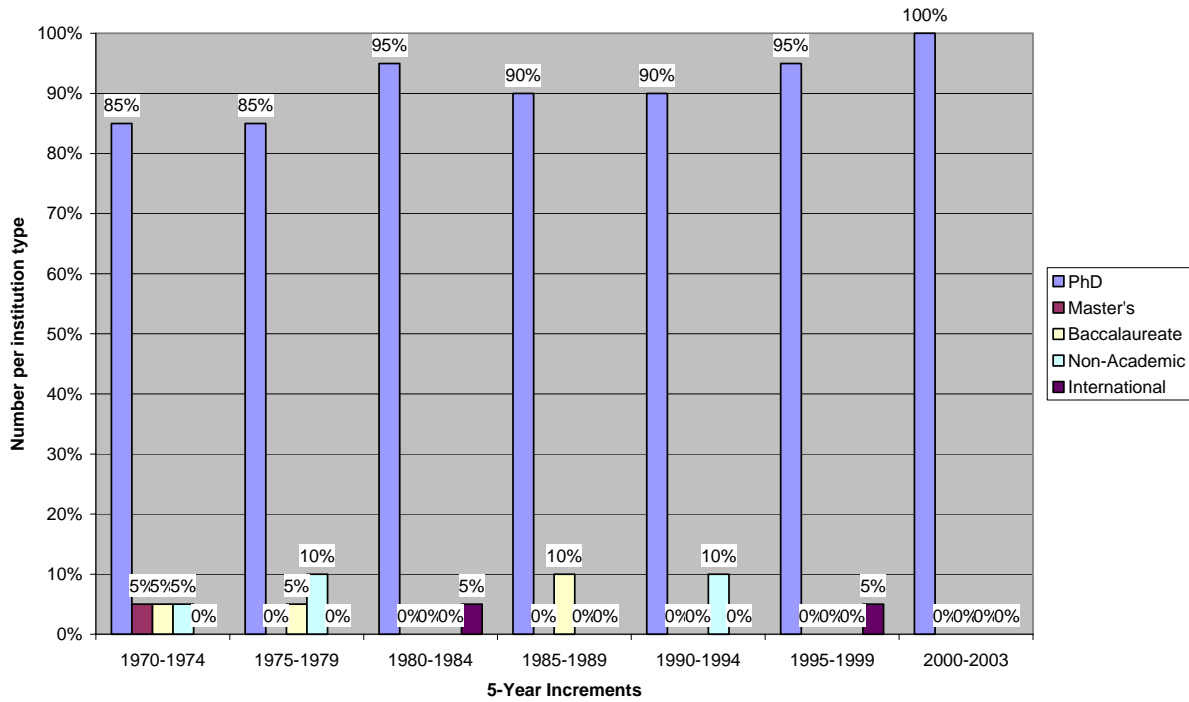
**Chart II. B. 6:  
Race/Ethnicity Distribution, Council  
1970-2003**



\*The category "Other" is a self-described.

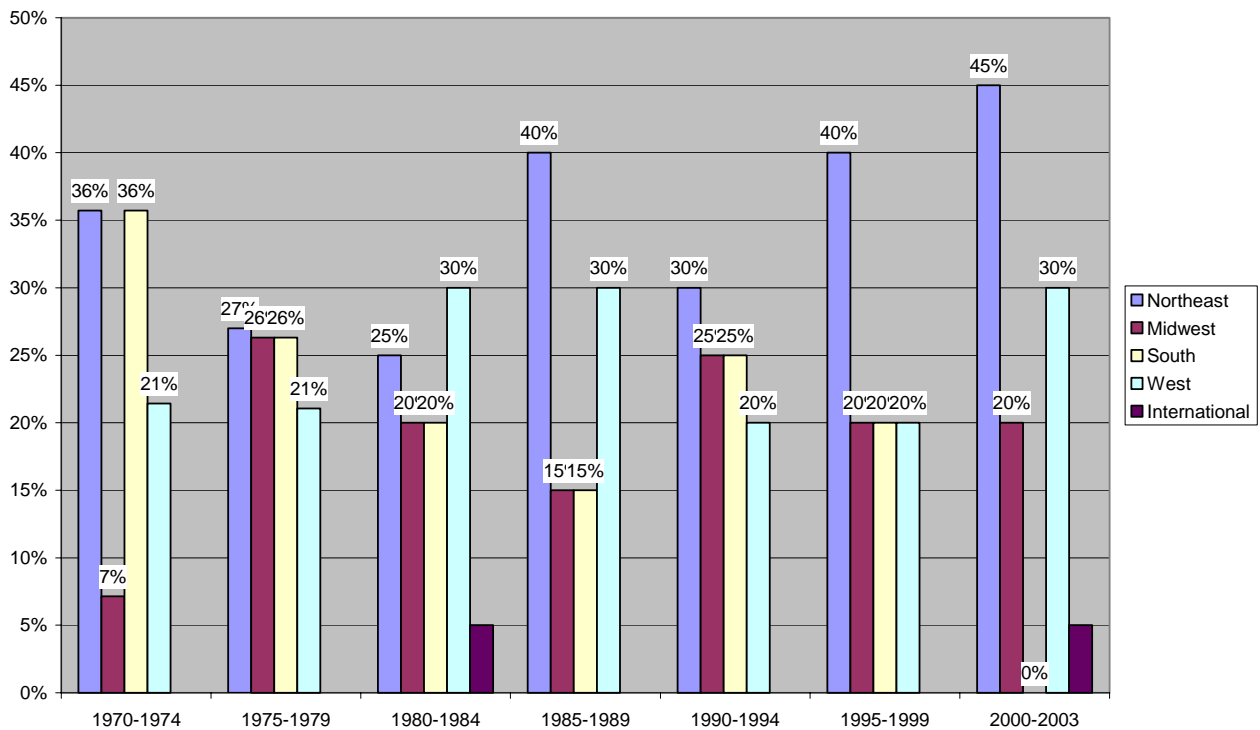
II. C. Vice President and Secretary

Chart II. C. 1: Type of Institution\*, Vice President and Secretary  
1970-2003

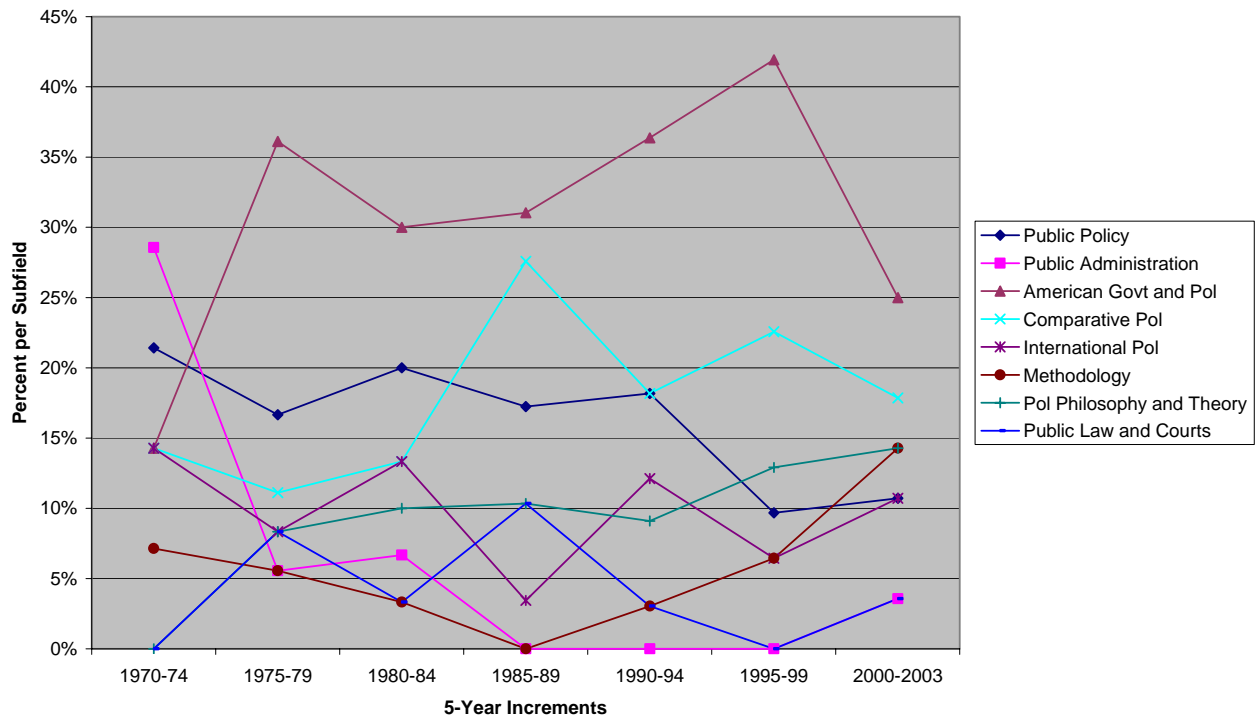


\*All Institution types refer to the Carnegie classifications unless noted as international or non-academic.

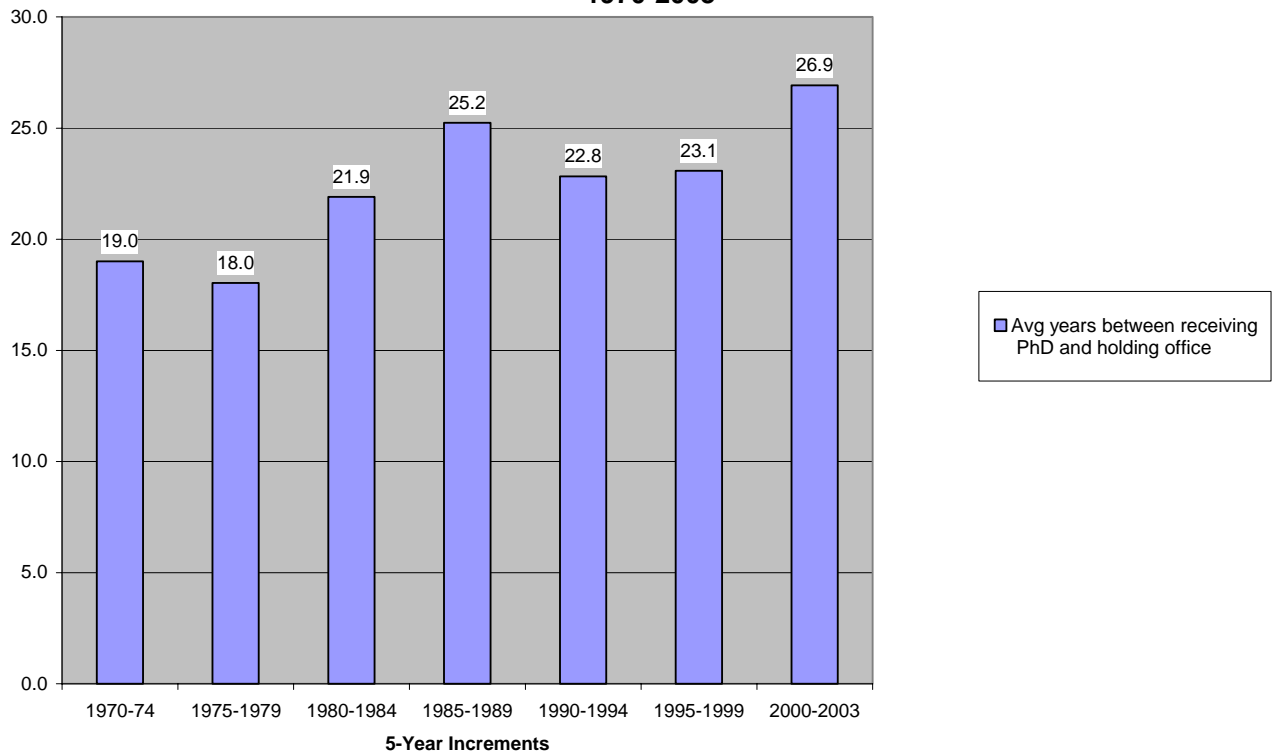
Chart II. D. 2: Regional Distribution,  
Vice President and Secretary 1970-2003



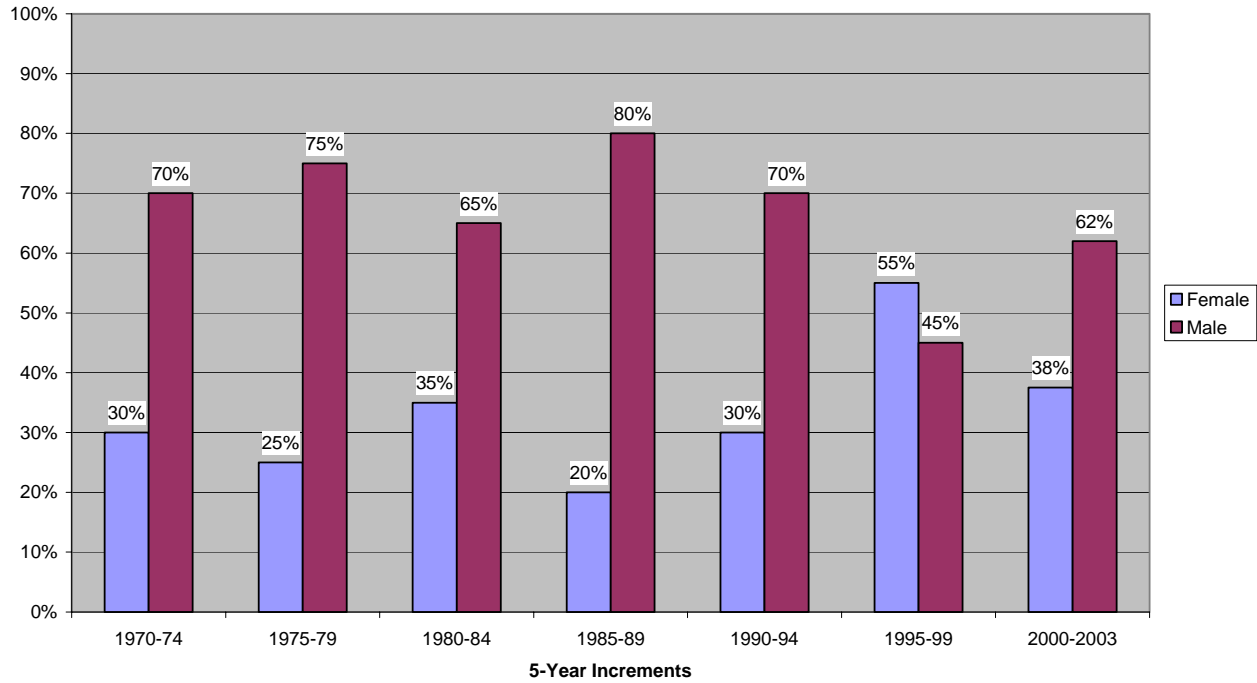
**Chart II. C. 3: Distribution of Major Fields, Vice President and Secretary  
1970-2003**



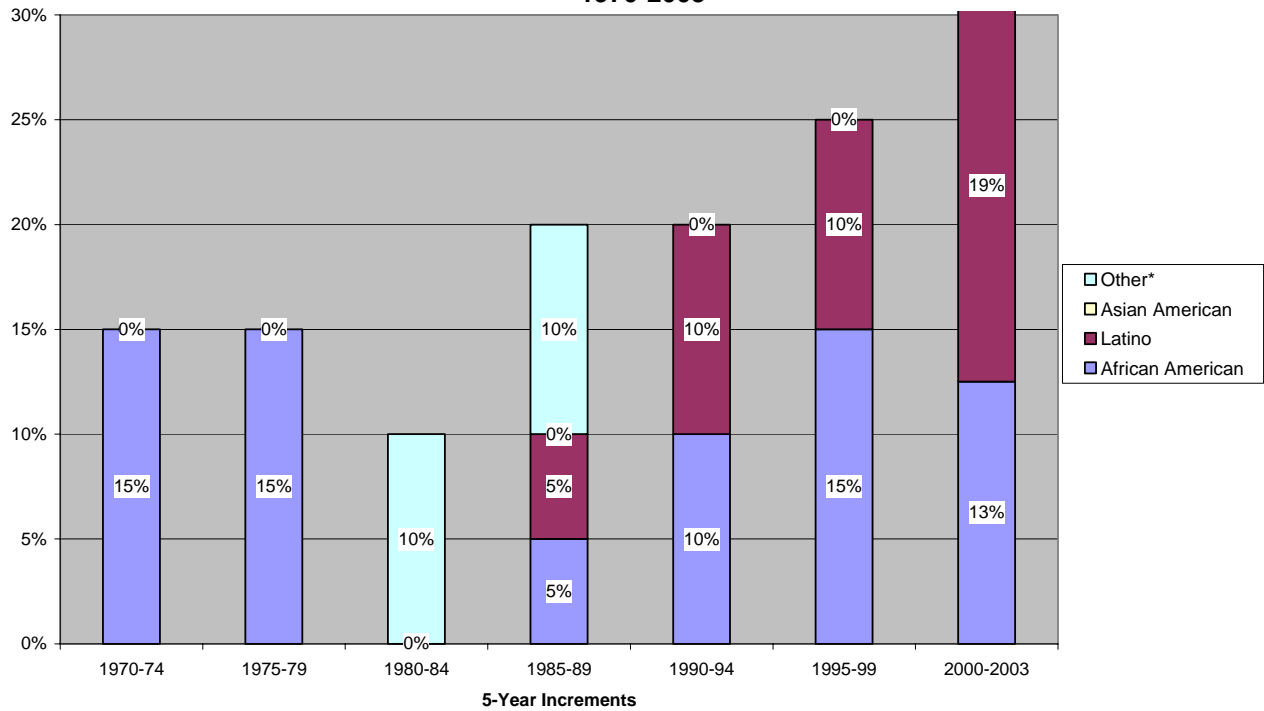
**Chart II. C. 4:  
Average years since PhD received, Vice President and Secretary  
1970-2003**



**Chart II. C. 5:  
Gender Distribution, Vice President and Secretary  
1970-2003**



**Chart II. C. 6:  
Race/Ethnicity Distribution, Vice President and Secretary  
1970-2003**



\*The category "Other" is self-described.

Chart II. D. 1

Data for type of institution for the President category is not included because only 1 of 34 presidents from 1970-2003 came from a non-PhD institution (Williams College, 1975).

Chart II. D. 2: Regional Distribution, President 1970-2003

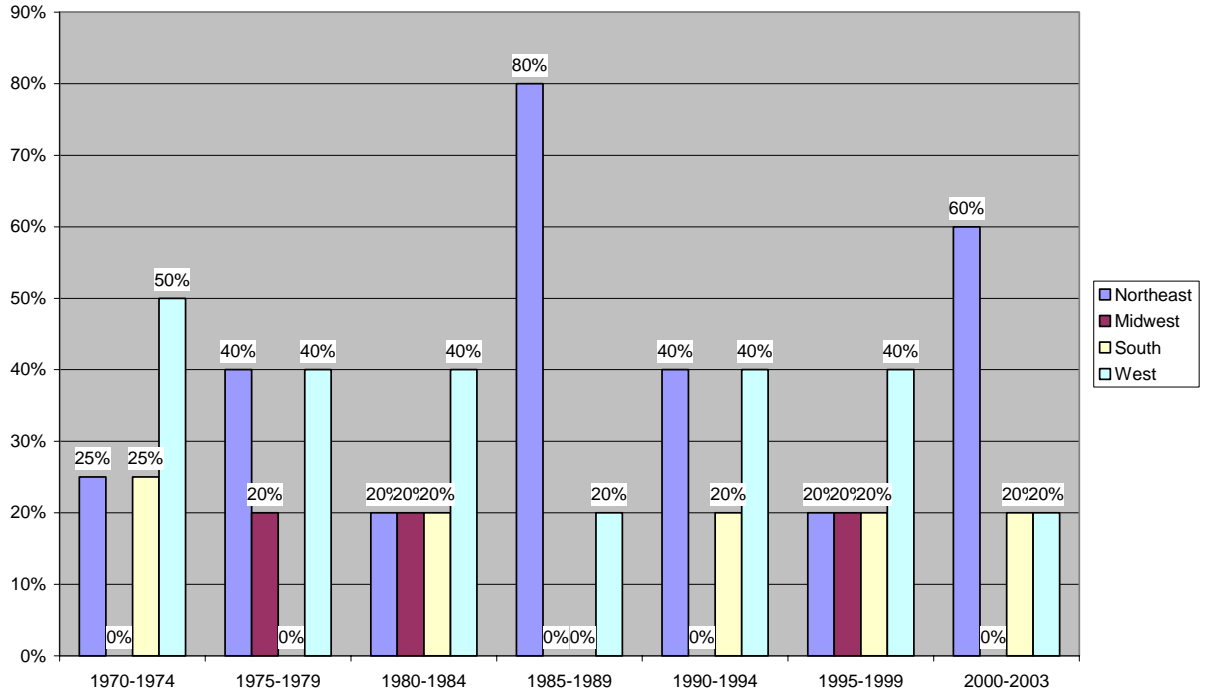
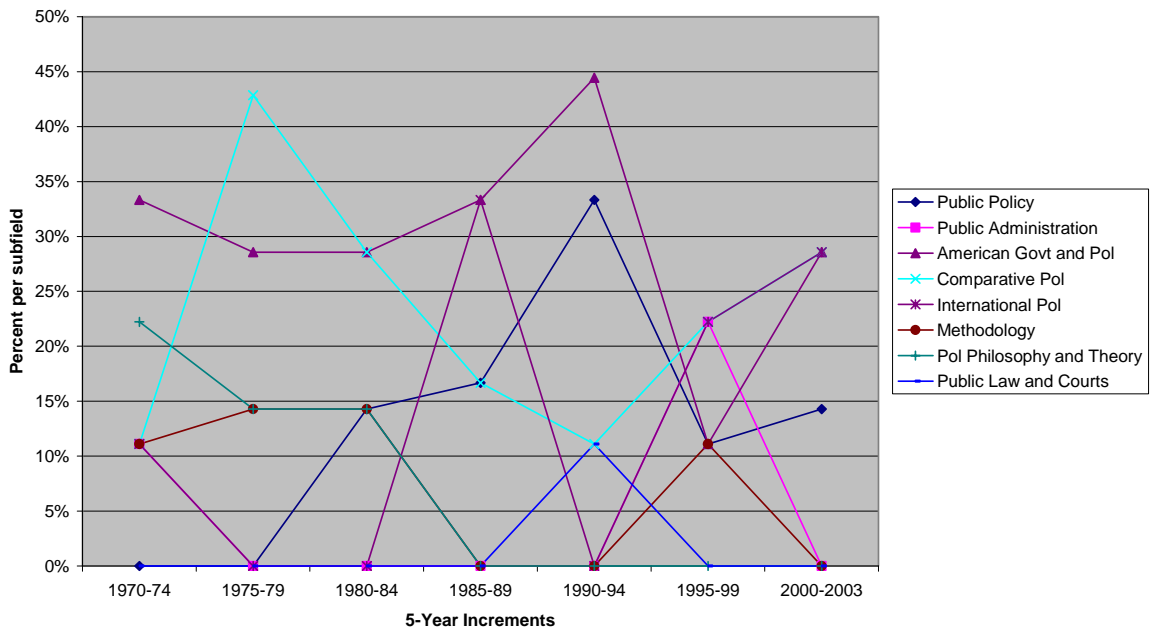
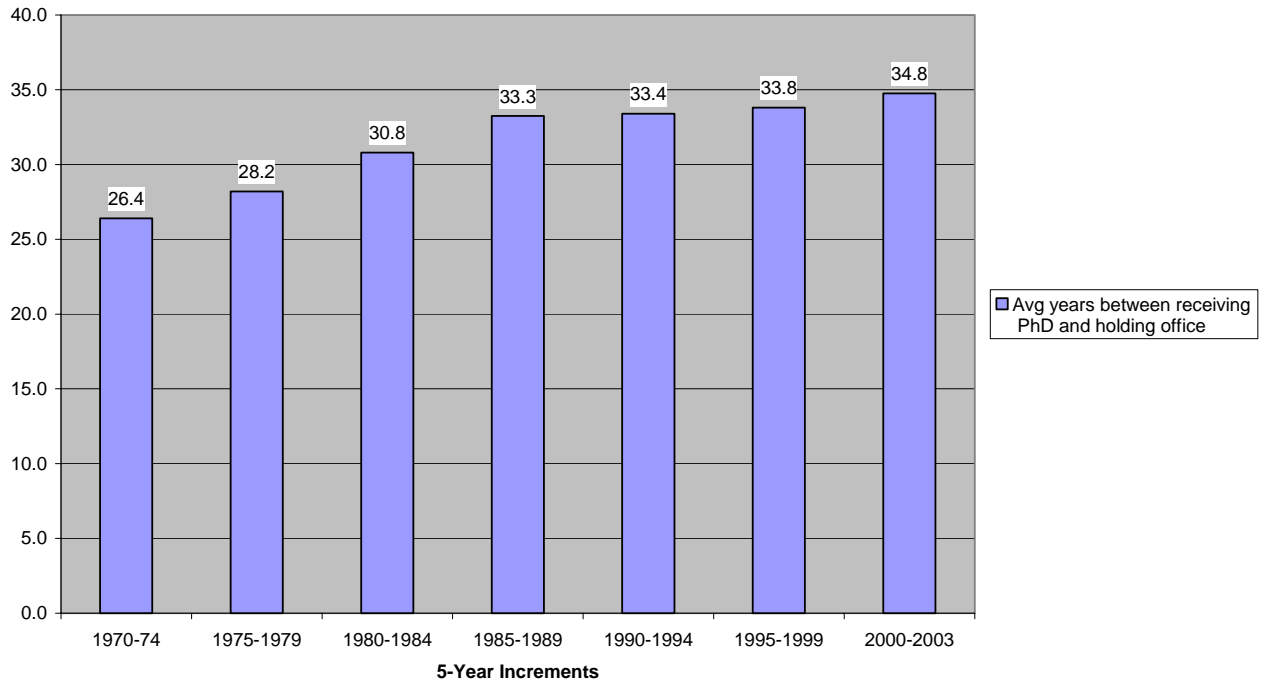


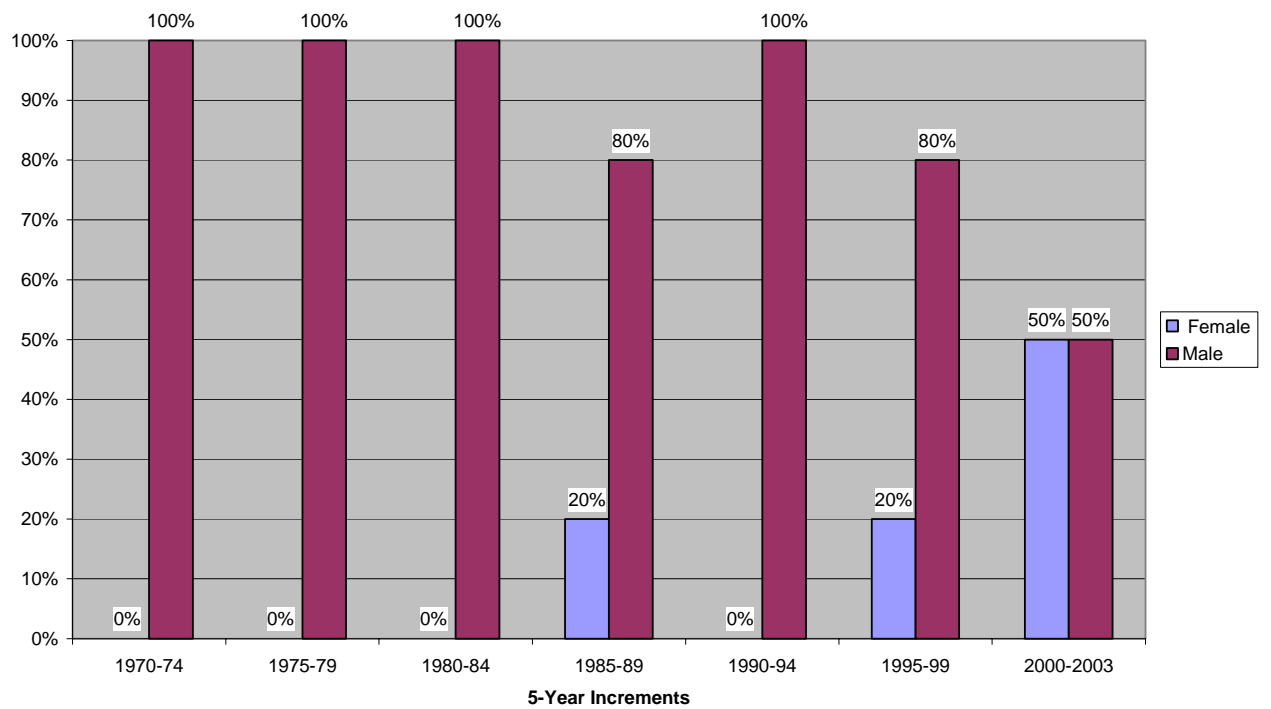
Chart II. D. 3:  
Distribution of Major Fields, President 1970-2003



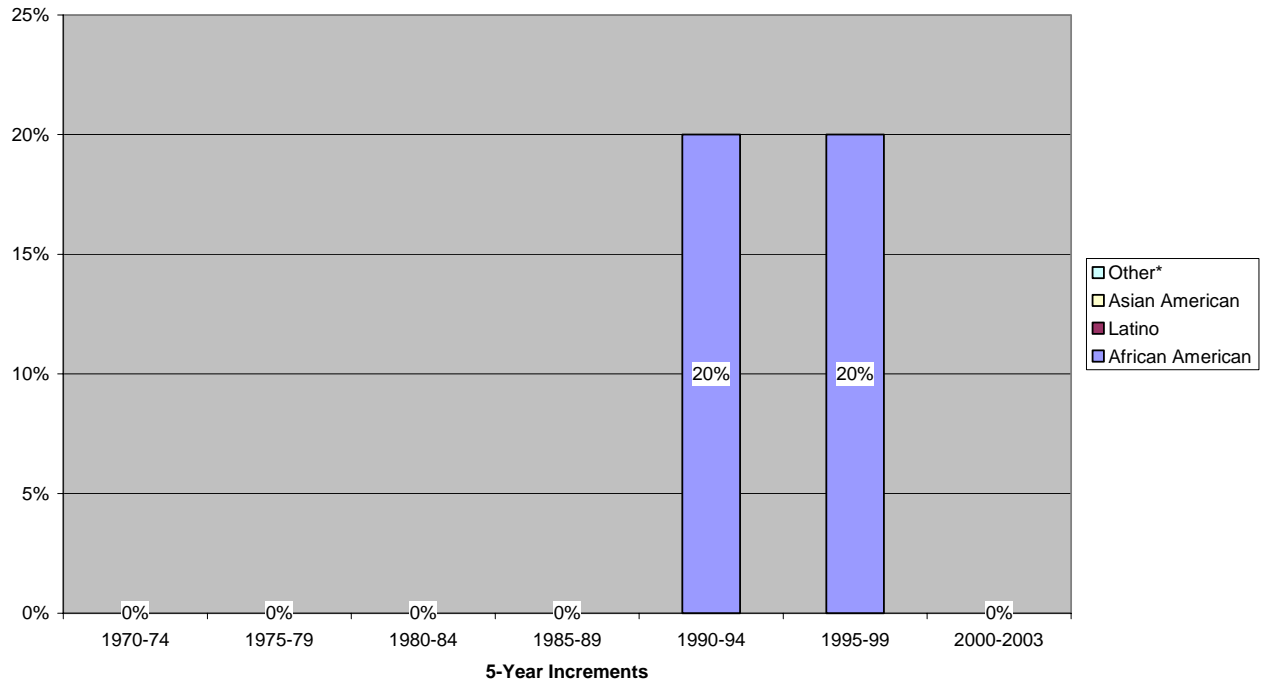
**Chart II. D. 4:  
Average years since PhD received, President  
1970-2003**



**Chart II. D. 5:  
Gender Distribution, President  
1970-2003**



**Chart II. D. 6:  
Race/Ethnicity Distribution, President  
1970-2003**



\*The category "Other" is self-described.